

Wilson

7067.01 - 7067.21



Product

Upholstery

Description

Plain upholstery fabric made from 100% recycled plastic waste, a matte non-directional structure with a soft touch

Composition

100% recycled polyester FR

Width

± 150 cm, ± 59 inches

Weight

± 771 gr/m², ± 25 oz/yd²

Flame retardancy

EN 1021/1-2 , Pass

BS 5852 , Crib 5

DIN 4102 , B1

Cal TB 117-2013, section 1 , Pass

IMO 2010 FTP part 8 , Pass

NFPA 260 , Class 1

Abrasion

ISO 12947-2 , 80.000 rubs Martindale

ASTM D3597/D4157 (#10 cotton duck) , 100.000 double rubs Wyzenbeek

Pilling

ISO 12945-2

4-5 (scale 1-5)

Colorfastness to crocking

ISO 105 X12

wet 4-5 (scale 1-5) / dry 4-5 (scale 1-5)

Colorfastness to light

ISO 105 B02

6 (scale 1-8)

Seam slippage

ISO 13936-2

warp 4 mm / weft 2 mm

Breaking strength

ISO 13934-1

warp 1480 N / weft 2500 N

Labels



USCG -
EU MRA
0038



STANDARD
100
521-3365
Hohenstein HTTI

Care & Maintenance

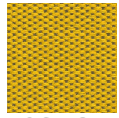


Shrinkage

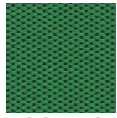
Shrinkage 30° warp -1.6% / weft -2.8%

Wilson

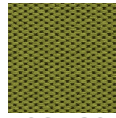
7067.01 - 7067.21



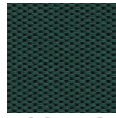
7067.21



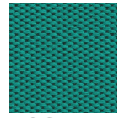
7067.19



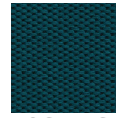
7067.20



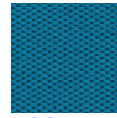
7067.18



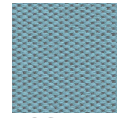
7067.17



7067.16



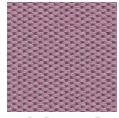
7067.15



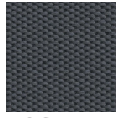
7067.14



7067.13



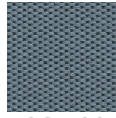
7067.12



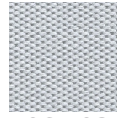
7067.11



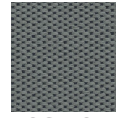
7067.10



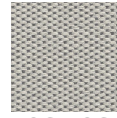
7067.09



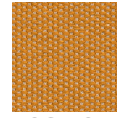
7067.08



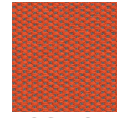
7067.07



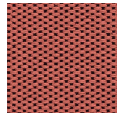
7067.06



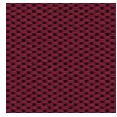
7067.05



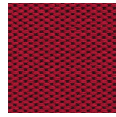
7067.04



7067.03



7067.02



7067.01