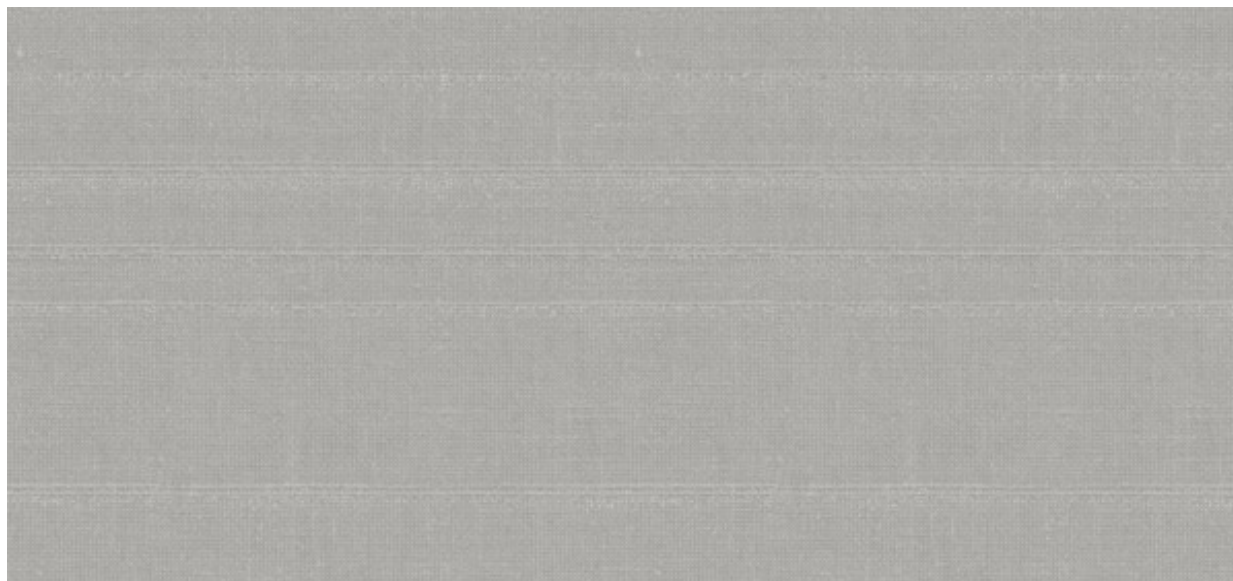


Terralin

2621.60 – 2621.69



Produkt

Okleina ścienna

Opis

Len w poziome nieregularne pasy, pokryty metaliczną powłoką

Skład

100% len na nośniku papierowym

Szerokość

± 137 cm, ± 54 inches

Gramatura

± 277 gr/m², ± 12 oz/yd¹

Odporność ogniowa

EN 13501 , B, s1 - d0

ASTM E84 , Pass, A

Etykiety



EN 15102

Terralin

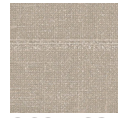
2621.60 – 2621.69



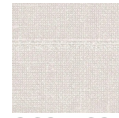
2621.65



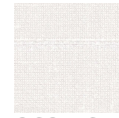
2621.64



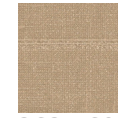
2621.63



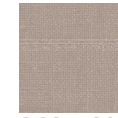
2621.62



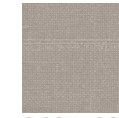
2621.61



2621.60



2621.69



2621.68



2621.67



2621.66