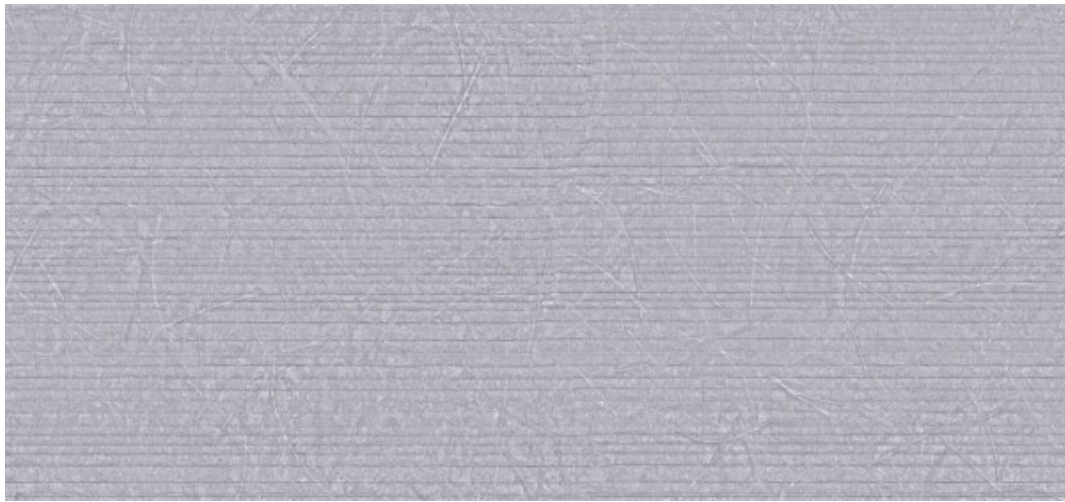


Terral

2617.40 - 2617.49



Prodotto

Rivestimenti murali

Descrizione

Venature orizzontali con striature irregolari

Composizione

70% pasta di legno / 20% poliestere / 10% sisal su un supporto in carta

Larghezza

± 137 cm, ± 54 inches

Peso

± 263 gr/m², ± 12 oz/yd¹

Resistenza al fuoco

ASTM E84 , Pass, A

EN 13501 , B, s2 - d0

Etichette



Terral

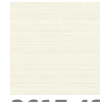
2617.40 - 2617.49



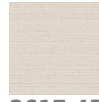
2617.40



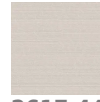
2617.41



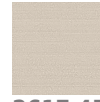
2617.42



2617.43



2617.44



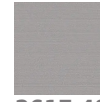
2617.45



2617.46



2617.47



2617.48



2617.49