

Swan

8071.01 - 8071.16



Product
Curtain

Description

Basic transparent room-high curtain fabric with a natural matt look

Composition

100% flame retardant polyester

Width

± 300 cm, ± 118 inches

Weight

± 285 gr/m², ± 9 oz/yd²

Visual & Thermal comfort

EN 410/EN 14501

Test available

Flame retardancy

NFPA 701 (meth. 1 or 2) , Pass

EN 13773 , Class 1

BS 5867-2 , Type C

NF P 92/503-507 , M1

DIN 4102 , B1

Übereinstimmung , Pass

UNI VF 8456-8457 , Classe 1

CAN/ULC S109 , Pass

IMO 2010 FTP part 7 , Pass

Colorfastness to crocking

ISO 105-X12

wet 4-5 (scale 1-5) / dry 4-5 (scale 1-5)

AATCC 8 (solids)

wet 5 (scale 1-5) / dry 5 (scale 1-5)

Colorfastness to light

ISO 105-B02

6 (scale 1-8)

AATCC 16.2 option 1 or 16.3 opt 3

5 (scale 1-5)

Labels

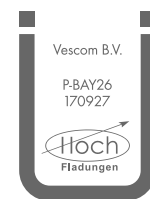


USCG -
EU MRA
0038



STANDARD
100

S07-0023
Hohenstein HTTI



Baustoffklasse schwerentflammbar
DIN 4102, B1

Care & Maintenance



Shrinkage

Shrinkage 70° warp 2% / weft -0.4%

Swan

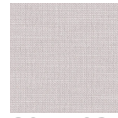
8071.01 - 8071.16



8071.01



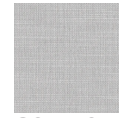
8071.02



8071.03



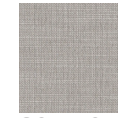
8071.04



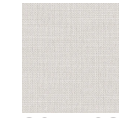
8071.05



8071.06



8071.07



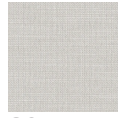
8071.08



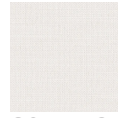
8071.09



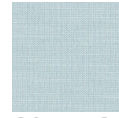
8071.10



8071.11



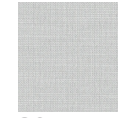
8071.12



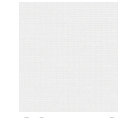
8071.13



8071.14



8071.15



8071.16