

Sotra

8070.01 - 8070.24



Producto

Cortinas

Descripción

Tela para cortinas de aspecto de seda natural, con efecto de oscurecimiento

Composición

100% flame retardant polyester acrylic coating

Anchura

± 283 cm, ± 111 inches

Peso

± 778 gr/m², ± 25 oz/yd²

Absorción del ruido

ISO 354, alpha w

0.35

Confort Visual & Térmico

EN 410/EN 14501

Test available

AATCC 148

Test available

Combustión retardada

NFPA 701 (meth. 1 or 2) , Pass

EN 13773 , Class 1

BS 5867-2 , Type B

DIN 4102 , B1

Übereinstimmung , Pass

UNI VF 8456-8457 , Classe 1

CAN/ULC S109 , Pass

IMO 2010 FTP part 7 , Pass

Resistencia al frotamiento

ISO 105-X12

wet 4-5 (scale 1-5) / dry 4-5 (scale 1-5)

AATCC 8 (solids)

wet 5 (scale 1-5) / dry 5 (scale 1-5)

Insensibilidad a la luz

ISO 105-B02

5 (scale 1-8)

AATCC 16.2 option 1 or 16.3 opt 3

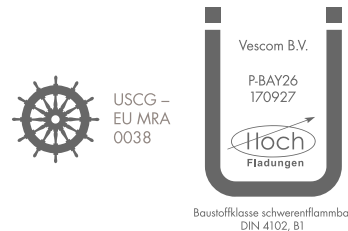
4.5 (scale 1-5)

Resistencia al deslizamiento de costuras

ASTM D434

warp 48 lbs / weft 53 lbs

Etiquetas



Cuidado & Mantenimiento



Contracción

Shrinkage 30° warp -1% / weft -0.5%

Shrinkage 70° warp -1.2% / weft -0.4%

Sotra

8070.01 - 8070.24



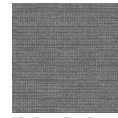
8070.01



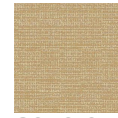
8070.02



8070.03



8070.04



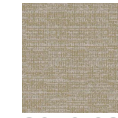
8070.05



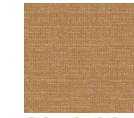
8070.06



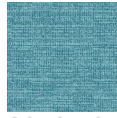
8070.07



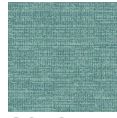
8070.08



8070.09



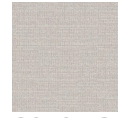
8070.10



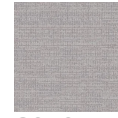
8070.11



8070.12



8070.13



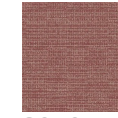
8070.14



8070.15



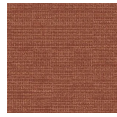
8070.16



8070.17



8070.18



8070.19



8070.20



8070.21



8070.22



8070.23



8070.24