

# Sotra

8070.01 - 8070.24



**Product**  
**Curtain**

**Description**  
**Natural silk look curtain fabric, black-out**

**Composition**  
**100% flame retardant polyester acrylic coating**

**Width**  
**± 283 cm, ± 111 inches**

**Weight**  
**± 778 gr/m<sup>2</sup>, ± 25 oz/yd<sup>2</sup>**

**Sound absorption**  
**ISO 354, alpha w**  
0.35

**Visual & Thermal comfort**  
**AATCC 148**  
Test available  
**EN 410/EN 14501**  
Test available

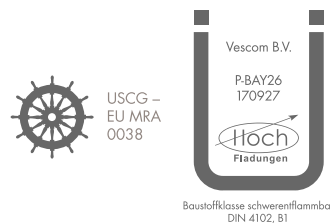
**Flame retardancy**  
**BS 5867-2 , Type B**  
**CAN/ULC S109 , Pass**  
**DIN 4102 , B1**  
**EN 13773 , Class 1**  
**IMO 2010 FTP part 7 , Pass**  
**NFPA 701 (meth. 1 or 2) , Pass**  
**Übereinstimmung , Pass**  
**UNI VF 8456-8457 , Classe 1**

**Colorfastness to crocking**  
**AATCC 8 (solids)**  
5 (scale 1-5) wet / 5 (scale 1-5) dry  
**ISO 105-X12**  
4-5 (scale 1-5) wet / 4-5 (scale 1-5) dry

**Colorfastness to light**  
**AATCC 16.2 option 1 or 16.3 opt 3**  
4.5 (scale 1-5)  
**ISO 105-B02**  
5 (scale 1-8)

**Seam slippage**  
**ASTM D434**  
48 lbs warp / 53 lbs weft

**Labels**



**Care & Maintenance**



**Shrinkage**  
**Shrinkage 30°**  
-1% warp / -0.5% weft  
**Shrinkage 70°**  
-1.2% warp / -0.4% weft

# Sotra

8070.01 - 8070.24

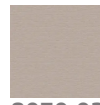
---



8070.01



8070.02



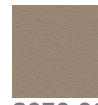
8070.03



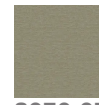
8070.04



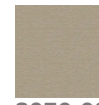
8070.05



8070.06



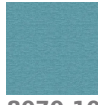
8070.07



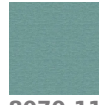
8070.08



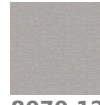
8070.09



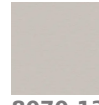
8070.10



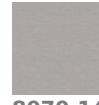
8070.11



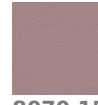
8070.12



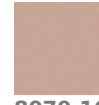
8070.13



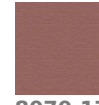
8070.14



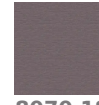
8070.15



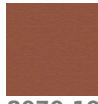
8070.16



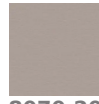
8070.17



8070.18



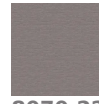
8070.19



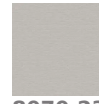
8070.20



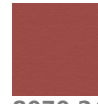
8070.21



8070.22



8070.23



8070.24