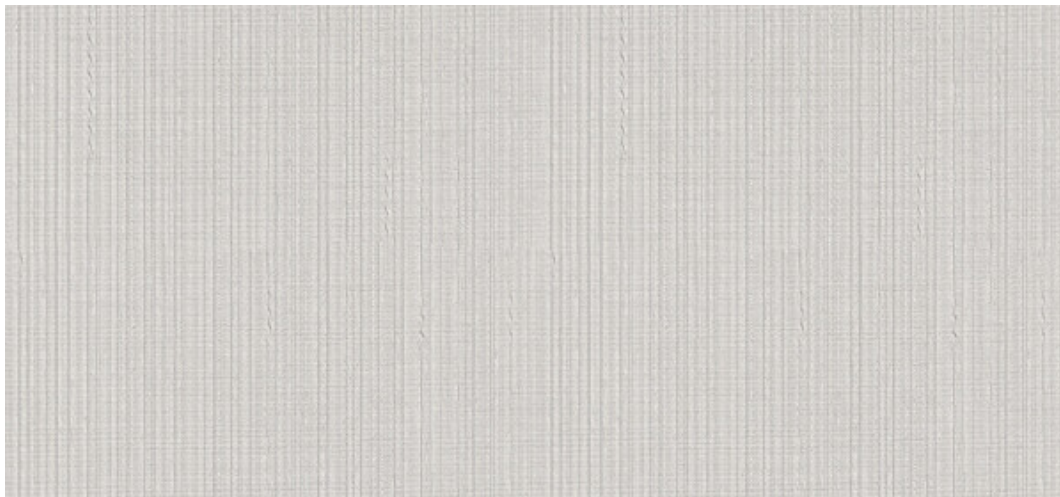


# Seneca

1016.01 - 1016.18



**Produto**  
Revestimento mural

**Peso**  
 $\pm 350 \text{ gr/m}^2$ ,  $\pm 15 \text{ oz/yd}^2$

**Descrição**  
Estrutura têxtil longitudinal

**Resistência ao fogo**  
ASTM E84 , Pass, A  
EN 13501 , B, s1 - d0  
IMO 2010 FTP part 2-5 , Pass

**Composição**  
Camada vinílica estampada com tintas à base de água e base de algodão

**Marcas de qualidade**

**Largura**  
 $\pm 130 \text{ cm}$ ,  $\pm 51/52 \text{ inches}$



USCG -  
EU MRA  
0038

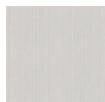


vinyl<sup>plus</sup>  
L'ÉCOLE DE LA QUALITÉ

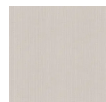
# Seneca

1016.01 - 1016.18

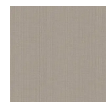
---



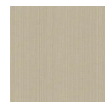
1016.01



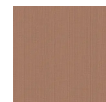
1016.02



1016.03



1016.04



1016.05



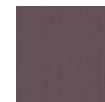
1016.06



1016.07



1016.08



1016.09



1016.10



1016.11



1016.12



1016.13



1016.14



1016.15



1016.16



1016.17



1016.18