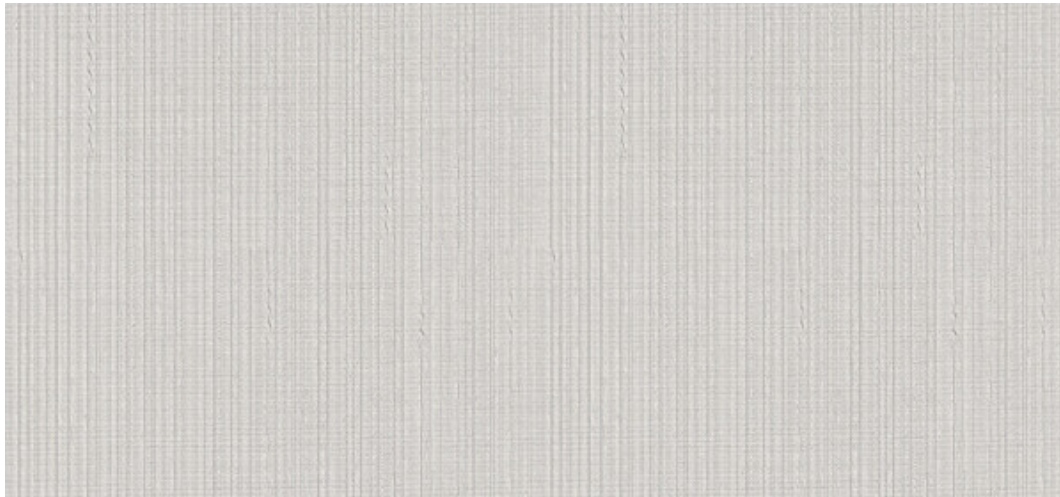


# Seneca

1016.01 - 1016.18



**Prodotto**  
Rivestimenti murali

**Descrizione**  
Struttura lunghezza tessuto

**Composizione**  
Tessuto in puro cotone con spalmatura di monomeri  
vinilici completamente polimerizzati, stampato con  
inchiostri a base acquosa

**Larghezza**  
± 130 cm, ± 51/52 inches

**Peso**  
± 350 gr/m<sup>2</sup>, ± 15 oz/yd<sup>1</sup>

**Resistenza al fuoco**  
ASTM E84 , Pass, A  
EN 13501 , B, s1 - d0  
IMO 2010 FTP part 2-5 , Pass

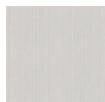
**Etichette**



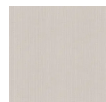
# Seneca

1016.01 - 1016.18

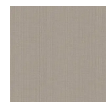
---



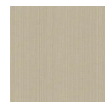
1016.01



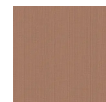
1016.02



1016.03



1016.04



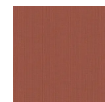
1016.05



1016.06



1016.07



1016.08



1016.09



1016.10



1016.11



1016.12



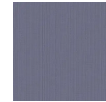
1016.13



1016.14



1016.15



1016.16



1016.17



1016.18