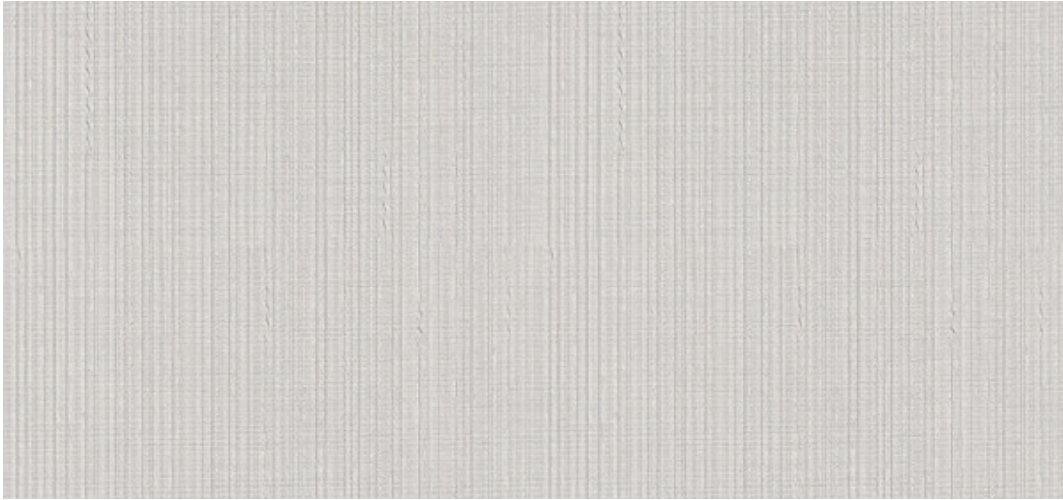


Seneca

1016.01 - 1016.18



Produit
Revêtement mural

Description
Structure textile longitudinale

Composition
Couche vinyle, impression au moyen d'encre à base d'eau, support en coton

Largeur
± 130 cm, ± 51/52 inches

Poids
± 350 gr/m², ± 15 oz/yd¹

Non feu
ASTM E84 , Pass, A
EN 13501 , B, s1 - d0
IMO 2010 FTP part 2-5 , Pass

Étiquettes

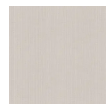


Seneca

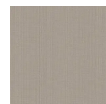
1016.01 - 1016.18



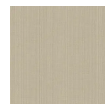
1016.01



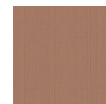
1016.02



1016.03



1016.04



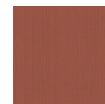
1016.05



1016.06



1016.07



1016.08



1016.09



1016.10



1016.11



1016.12



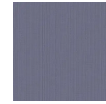
1016.13



1016.14



1016.15



1016.16



1016.17



1016.18