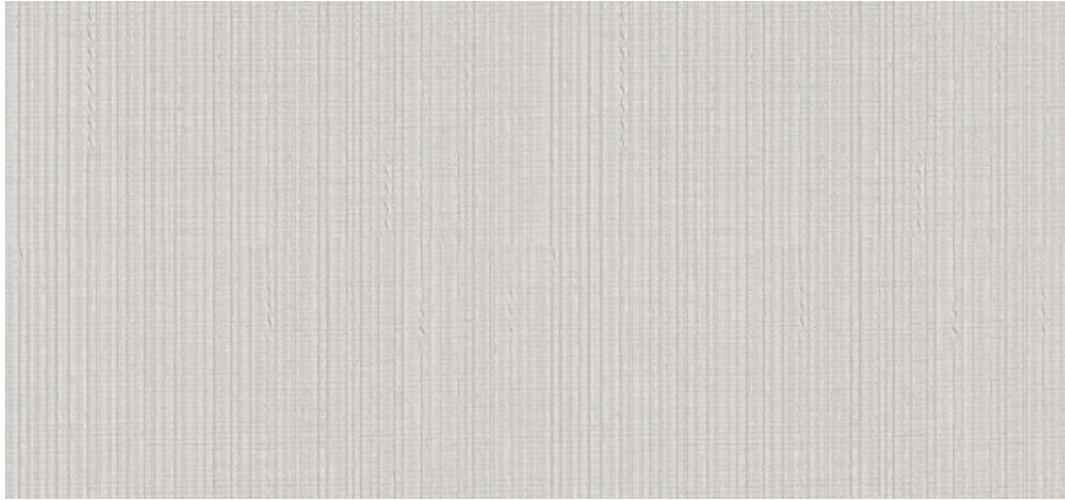


Seneca

1016.01 - 1016.18



Producto
Revestimiento mural

Descripción
Estructura longitudinal textil

Composición
Capa vinílica estampada con tintas al agua, sobre soporte de algodón

Anchura
± 130 cm, ± 51/52 inches

Peso
± 350 gr/m², ± 15 oz/yd²

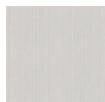
Combustión retardada
ASTM E84 , Pass, A
EN 13501 , B, s1 - d0
IMO 2010 FTP part 2-5 , Pass

Etiquetas

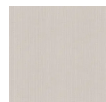


Seneca

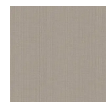
1016.01 - 1016.18



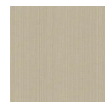
1016.01



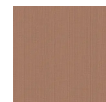
1016.02



1016.03



1016.04



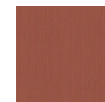
1016.05



1016.06



1016.07



1016.08



1016.09



1016.10



1016.11



1016.12



1016.13



1016.14



1016.15



1016.16



1016.17



1016.18