

Scott

7045.01 - 7045.18



Product

Meubelbekleding

Omschrijving

Overall beeld gevormd door kleine horizontale en verticale lijntjes

Samenstelling

Geschuimde vinyl, katoen/polyester backing

Breedte

± 137-140 cm, ± 54-55 inches

Gewicht

± 800 gr/m², ± 36 oz/yd¹

Brandwerendheid

BS 5852 , Crib 5

Cal TB 117-2013, section 1 , Pass

DIN 4102 , B2

EN 1021/1-2 , Pass

IMO 2010 FTP part 8 , Pass

NF P 92/503-507 , M2

NFPA 260 , Class 1

Slijtvastheid

ASTM D3597/D4157 (#10 cotton duck) ,
100.000 double rubs Wyzenbeek
ISO 12947-2 , > 300.000 rubs Martindale

Wrijftechtheid

AATCC 8

5 (scale 1-5) wet / 5 (scale 1-5) dry

ISO 105 X12

5 (scale 1-5) wet / 5 (scale 1-5) dry

Lichtechtheid

ISO 105 B02

7 (scale 1-8)

Treksterkte

ASTM D5034

113 lbs warp / 90 lbs weft

Keurmerken



USCG -
EU MRA
0038

vinyl^{plus}
COMMITTED TO
SUSTAINABLE DEVELOPMENT

Scott

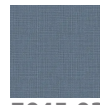
7045.01 - 7045.18



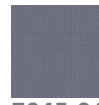
7045.01



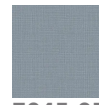
7045.02



7045.03



7045.04



7045.05



7045.06



7045.07



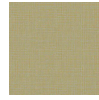
7045.08



7045.09



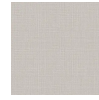
7045.10



7045.11



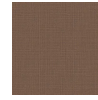
7045.12



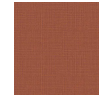
7045.13



7045.14



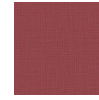
7045.15



7045.16



7045.17



7045.18