

# Rona

8080.01 - 8080.09



## Product

**Gordijnstoffen**

## Omschrijving

**Mat, onregelmatig geweven weefsel in een op natuurlijk linnen geïnspireerde look**

## Samenstelling

**100% brandvertragend polyester**

## Breedte

**± 301 cm, ± 118 inches**

## Gewicht

**± 762 gr/m<sup>2</sup>, ± 25 oz/yd<sup>2</sup>**

## Geluidsabsorptie

**ISO 354, alpha w**

0.75 (pleated)

## Visueel & Thermisch comfort

**EN 410/EN 14501**

Test available

## Brandwerendheid

**BS 5867-2 , Type C**

**CAN/ULC S109 , Pass**

**DIN 4102 , B1**

**EN 13773 , Class 1**

**IMO 2010 FTP part 7 , Pass**

**NF P 92/503-507 , M1**

**NFPA 701 (meth. 1 or 2) , Pass**

**Übereinstimmung , Pass**

**UNI VF 8456-8457 , Classe 1**

## Wrijfechtheid

**AATCC 8 (solids)**

5 (scale 1-5) wet / 5 (scale 1-5) dry

**ISO 105-X12**

4-5 (scale 1-5) wet / 4-5 (scale 1-5) dry

## Lichtecheid

**AATCC 16.2 option 1 or 16.3 opt 3**

4.5 (scale 1-5)

**ISO 105-B02**

6 (scale 1-8)

## Naadschuifweerstand

**ASTM D434**

49 lbs warp / 55 lbs weft

**ISO 13936-2**

3.7 mm warp / 4 mm weft

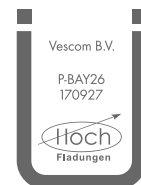
## Keurmerken



USCG -  
EU MRA  
0038



STANDARD  
100  
S07-0023  
Hohenstein HTTI



Baustoffklasse schwerentflammbar  
DIN 4102, B1

## Reiniging & Onderhoud



## Krimp

**Shrinkage 70°**

-2.1% warp / -1.8% weft

# Rona

8080.01 - 8080.09

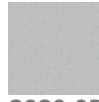
---



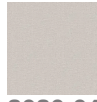
8080.01



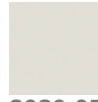
8080.02



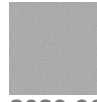
8080.03



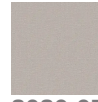
8080.04



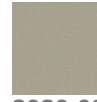
8080.05



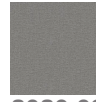
8080.06



8080.07



8080.08



8080.09