

Rolla

7065.01 - 7065.20



Produto

Revestimento para mobiliário

Descrição

Tecido para mobiliário, tridimensional, robusto e gráfico

Composição

88% recycled polyester FR / 12% polyester FR

Largura

± 140 cm, ± 55 inches

Peso

± 775 gr/m², ± 25 oz/yd²

Resistência ao fogo

**BS 5852 , Crib 5
Cal TB 117-2013, section 1 , Pass
DIN 4102 , B1
EN 1021/1-2 , Pass
IMO 2010 FTP part 8 , Pass
NF P 92/503-507 , M1
NFPA 260 , Class 1**

Desgaste à abrasão

**ASTM D3597/D4157 (#10 cotton duck) ,
100.000 double rubs Wyzenbeek
ISO 12947-2 , 50.000 rubs Martindale**

Pilling

**ASTM D3511
3 (scale 1-5)
ISO 12945-2
4 (scale 1-5)**

Resistência à fricção

**AATCC 8
5 (scale 1-5) wet / 4.5 (scale 1-5) dry
ISO 105 X12
4-5 (scale 1-5) wet / 4-5 (scale 1-5) dry**

Resistência à luz

**AATCC 16.2 opt.1 or 16.3 opt. 3
4 (scale 1-5)
ISO 105 B02
6 (scale 1-8)**

Resistência ao deslizamento das costuras

**ASTM D4034
102 lbs warp / 83 lbs weft
ISO 13936-2
2.3 mm warp / 2 mm weft**

Resistência à tensão

**ASTM D5034
239 lbs warp / 560 lbs weft
ISO 13934-1
1120 N warp / 2500 N weft**

Marcas de qualidade



Cuidados & Manutenção

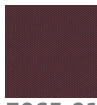


Encolhimento

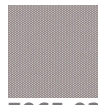
**Shrinkage 70°
-2.8% warp / -2.6% weft**

Rolla

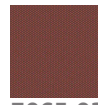
7065.01 - 7065.20



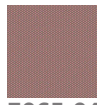
7065.01



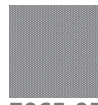
7065.02



7065.03



7065.04



7065.05



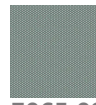
7065.06



7065.07



7065.08



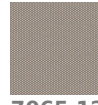
7065.09



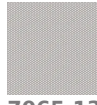
7065.10



7065.11



7065.12



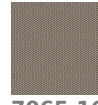
7065.13



7065.14



7065.15



7065.16



7065.17



7065.18



7065.19



7065.20