

# Rolla

7065.01 - 7065.20



## Prodotto

**Tessuti per arredamento**

## Descrizione

**Upholstery fabric with a bold 3D graphic pattern**

## Composizione

**88% recycled polyester FR / 12% polyester FR**

## Larghezza

**± 140 cm, ± 55 inches**

## Peso

**± 775 gr/m<sup>2</sup>, ± 25 oz/yd<sup>2</sup>**

## Resistenza al fuoco

**BS 5852 , Crib 5  
Cal TB 117-2013, section 1 , Pass  
DIN 4102 , B1  
EN 1021/1-2 , Pass  
IMO 2010 FTP part 8 , Pass  
NF P 92/503-507 , M1  
NFPA 260 , Class 1**

## Resistenza all'abrasione

**ASTM D3597/D4157 (#10 cotton duck) ,  
100.000 double rubs Wyzenbeek  
ISO 12947-2 , 50.000 rubs Martindale**

## Resistenza al pilling

**ASTM D3511  
3 (scale 1-5)  
ISO 12945-2  
4 (scale 1-5)**

## Solidità allo sfregamento

**AATCC 8  
5 (scale 1-5) wet / 4.5 (scale 1-5) dry  
ISO 105 X12  
4-5 (scale 1-5) wet / 4-5 (scale 1-5) dry**

## Resistenza alla luce

**AATCC 16.2 opt.1 or 16.3 opt. 3  
4 (scale 1-5)  
ISO 105 B02  
6 (scale 1-8)**

## Resistenza al taglio cucitura

**ASTM D4034  
102 lbs warp / 83 lbs weft  
ISO 13936-2  
2.3 mm warp / 2 mm weft**

## Resistenza alla trazione

**ASTM D5034  
239 lbs warp / 560 lbs weft  
ISO 13934-1  
1120 N warp / 2500 N weft**

## Etichette



## Cura & Manutenzione



## Restringimento

**Shrinkage 70°  
-2.8% warp / -2.6% weft**

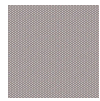
# Rolla

7065.01 - 7065.20

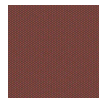
---



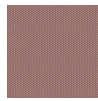
7065.01



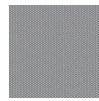
7065.02



7065.03



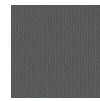
7065.04



7065.05



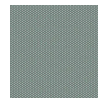
7065.06



7065.07



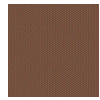
7065.08



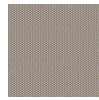
7065.09



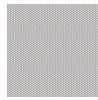
7065.10



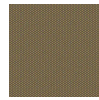
7065.11



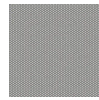
7065.12



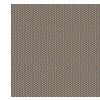
7065.13



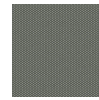
7065.14



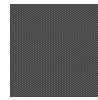
7065.15



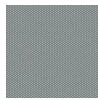
7065.16



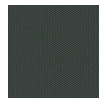
7065.17



7065.18



7065.19



7065.20