

Orienta

2617.10 - 2617.19



Produto

Revestimento mural

Descrição

Estrutura de tecido fino, metálico

Composição

70% popa de madeira / 30% poliéster sobre um suporte em papel

Largura

± 137 cm, ± 54 inches

Peso

± 161 gr/m², ± 7 oz/yd¹

Resistência ao fogo

EN 13501 , B, s2 - d0

ASTM E84 , Pass, A

Marcas de qualidade



EN 15102

Oriente

2617.10 - 2617.19



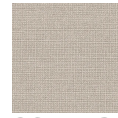
2617.10



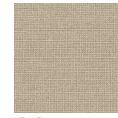
2617.11



2617.12



2617.13



2617.14



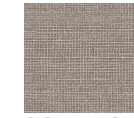
2617.15



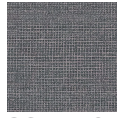
2617.16



2617.17



2617.18



2617.19