

# Nirmala

2623.00 – 2623.16



**Product**  
**Wandbekleding**

**Omschrijving**  
**Ruwe zijdemelange wandbekleding met een matte tweekleurige onregelmatige en handgemaakte look door het gebruik van horizontaal slubgaren**

**Samenstelling**  
**80% zijde / 20% recycled polyester on a paper backing**

**Breedte**  
**± 110 cm, ± 43 inches**

**Gewicht**  
**± 210 gr/m<sup>2</sup>, ± 7 oz/yd<sup>1</sup>**

**Brandwerendheid**  
**ASTM E84 , Pass, A**  
**EN 13501 , B, s1 - d0**

**Lichtechtheid**  
**ISO 105-B02**  
5-7 (scale 1-8)

**Keurmerken**



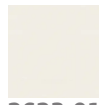
# Nirmala

2623.00 – 2623.16

---



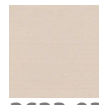
2623.00



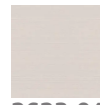
2623.01



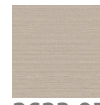
2623.02



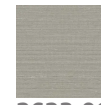
2623.03



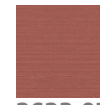
2623.04



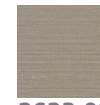
2623.05



2623.06



2623.07



2623.08



2623.09



2623.10



2623.11



2623.12



2623.13



2623.14



2623.15



2623.16