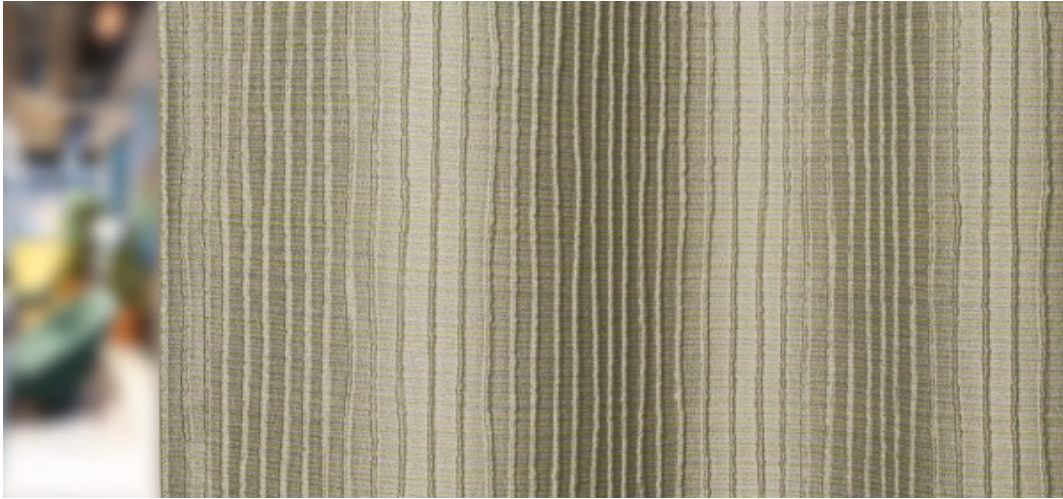


Naltar

8083.01 - 8083.16



产品 窗帘

描述

色调渐变且纵向有机三维肋状结构的双层编织

成分

100% 阻燃聚酯纤维

宽幅

± 144 cm, ± 57 inches

重量

± 273 gr/m², ± 9 oz/yd¹

吸声降噪

ISO 354, alpha w
0.50 (pleated)

视觉及热舒适控制

EN 410/EN 14501

Test available

阻燃

BS 5867-2, Type C
CAN/ULC S109, Pass
DIN 4102, B1
EN 13773, Class 1
IMO 2010 FTP part 7, Pass
NF P 92/503-507, M1
NFPA 701 (meth. 1 or 2), Pass
Übereinstimmung, Pass
UNI VF 8456-8457, Classe 1

耐摩擦褪色

AATCC 8 (solids)

5 (scale 1-5) wet / 5 (scale 1-5) dry

ISO 105-X12

4-5 (scale 1-5) wet / 4-5 (scale 1-5) dry

耐光照褪色

AATCC 16.2 option 1 or 16.3 opt 3

5 (scale 1-5)

ISO 105-B02

6 (scale 1-8)

耐滑缝

ASTM D434

29 lbs warp / 29 lbs weft

ISO 13936-2

2.5 mm warp / 2.7 mm weft

标签



USCG -
EU MRA
0038



STANDARD
100
S07-0023
Hohenstein HTTI



Baustoffklasse schwerentflammbar
DIN 4102, B1

保养与维护



收缩率

Shrinkage 70°

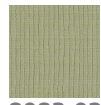
-1.4% warp / +1.5% weft

Naltar

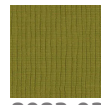
8083.01 - 8083.16



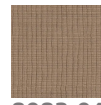
8083.01



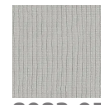
8083.02



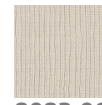
8083.03



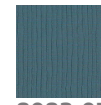
8083.04



8083.05



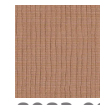
8083.06



8083.07



8083.08



8083.09



8083.10



8083.11



8083.12



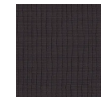
8083.13



8083.14



8083.15



8083.16