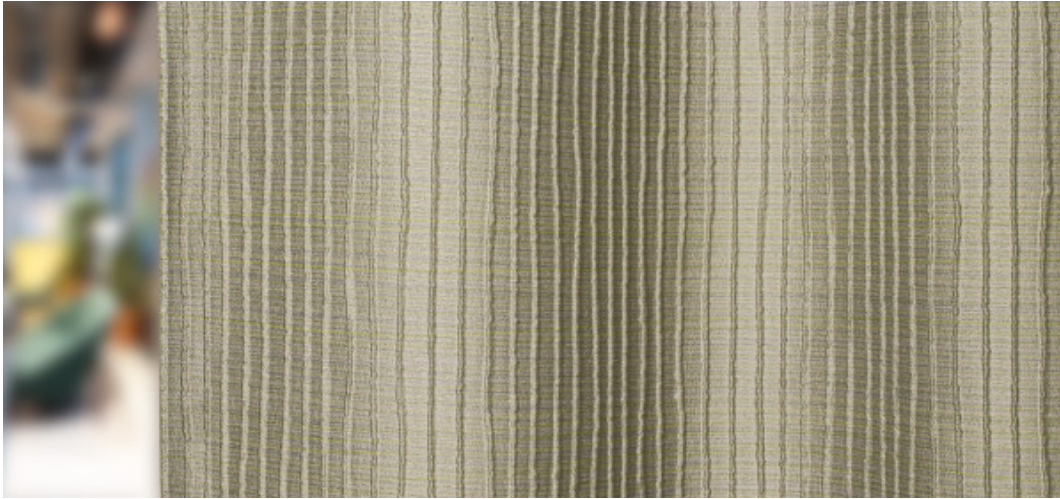


# Naltar

8083.01 - 8083.16



**Product**  
**Curtain**

**Description**

**Double weave with a vertical organic 3D rib structure in tonal shades**

**Composition**

**100% flame retardant polyester**

**Width**

**± 144 cm, ± 57 inches**

**Weight**

**± 273 gr/m<sup>2</sup>, ± 9 oz/yd<sup>1</sup>**

**Sound absorption**

**ISO 354, alpha w**

0.50 (pleated)

**Visual & Thermal comfort**

**EN 410/EN 14501**

Test available

**Flame retardancy**

**BS 5867-2 , Type C**

**CAN/ULC S109 , Pass**

**DIN 4102 , B1**

**EN 13773 , Class 1**

**IMO 2010 FTP part 7 , Pass**

**NF P 92/503-507 , M1**

**NFPA 701 (meth. 1 or 2) , Pass**

**Übereinstimmung , Pass**

**UNI VF 8456-8457 , Classe 1**

**Colorfastness to crocking**

**AATCC 8 (solids)**

5 (scale 1-5) wet / 5 (scale 1-5) dry

**ISO 105-X12**

4-5 (scale 1-5) wet / 4-5 (scale 1-5) dry

**Colorfastness to light**

**AATCC 16.2 option 1 or 16.3 opt 3**

5 (scale 1-5)

**ISO 105-B02**

6 (scale 1-8)

**Seam slippage**

**ASTM D434**

29 lbs warp / 29 lbs weft

**ISO 13936-2**

2.5 mm warp / 2.7 mm weft

**Labels**



USCG -  
EU MRA  
0038



STANDARD  
100  
507-0023  
Hohenstein HTTI



Baustoffklasse schwerentflammbar  
DIN 4102, B1

**Care & Maintenance**



**Shrinkage**

**Shrinkage 70°**

-1.4% warp / +1.5% weft

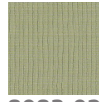
# Naltar

8083.01 - 8083.16

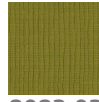
---



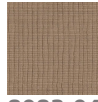
8083.01



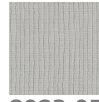
8083.02



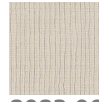
8083.03



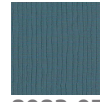
8083.04



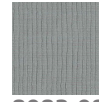
8083.05



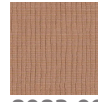
8083.06



8083.07



8083.08



8083.09



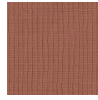
8083.10



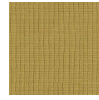
8083.11



8083.12



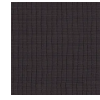
8083.13



8083.14



8083.15



8083.16