

# Moore

7075.01 – 7075.16



## 产品 面料

## 描述

多色编织网格状设计的100%再生材质家具面料

## 成分

100% recycled polyester FR

## 宽幅

± 141 cm, ± 56 inches

## 重量

± 835 gr/m<sup>2</sup>, ± 27 oz/yd<sup>1</sup>

## 阻燃

BS 5852 , Crib 5  
Cal TB 117-2013, section 1 , Pass  
DIN 4102 , B1  
EN 1021/1-2 , Pass  
IMO 2010 FTP part 8 , Pass  
NF P 92/503-507 , M1  
NFPA 260 , Class 1  
UNI 9175 , Classe 1

## 耐磨性

ASTM D3597/D4157 (#10 cotton duck) ,  
100.000 double rubs Wyzenbeek  
ISO 12947-2 , 70.000 rubs Martindale

## 起毛指数

ASTM D3511  
5 (scale 1-5)  
ISO 12945-2  
4-5 (scale 1-5)

## 耐摩擦褪色

AATCC 8  
5 (scale 1-5) wet / 5 (scale 1-5) dry  
ISO 105 X12  
4-5 (scale 1-5) wet / 4-5 (scale 1-5) dry

## 耐光照褪色

AATCC 16.2 opt.1 or 16.3 opt. 3  
4.5 (scale 1-5)  
ISO 105 B02  
6 (scale 1-8)

## 耐滑缝

ASTM D4034  
136 lbs warp / 126 lbs weft  
ISO 13936-2  
2 mm warp / 2 mm weft

## 抗断裂强度

ASTM D5034  
302 lbs warp / 296 lbs weft  
ISO 13934-1  
1790 N warp / 1760 N weft

## 标签



## 保养与维护



## 收缩率

Shrinkage 50°  
-1.6% warp / -3% weft

# Moore

7075.01 – 7075.16

---



7075.01



7075.02



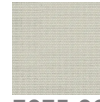
7075.03



7075.04



7075.05



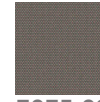
7075.06



7075.07



7075.08



7075.09



7075.10



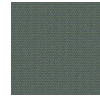
7075.11



7075.12



7075.13



7075.14



7075.15



7075.16