

Monte

7073.01 – 7073.16



Prodotto

Tessuti per arredamento

Descrizione

Tessuto da arredamento in velluto di mohair sostenibile certificato Cradle to Cradle® con pile estremamente alto in 16 colori opachi

Composizione

100% mohair (base: cotone)

Larghezza

± 140 cm, ± 55 inches

Peso

± 1215 gr/m², ± 39 oz/yd²

Resistenza al fuoco

**BS 5852 , Crib 5
Cal TB 117-2013, section 1 , Pass
DIN 4102 , B2
EN 1021/1-2 , Pass
IMO 2010 FTP part 8 , Pass
NF P 92/503-507 , M2
NFPA 260 , Class 1**

Resistenza all'abrasione

**ASTM D3597/D4157 (#10 cotton duck) ,
100.000 double rubs Wyzenbeek
ISO 12947-2 , 45.000 rubs Martindale**

Resistenza al pilling

ASTM D3511

5 (scale 1-5)

ISO 12945-2

4-5 (scale 1-5)

Solidità allo sfregamento

AATCC 8

5 (scale 1-5) wet / 5 (scale 1-5) dry

ISO 105 X12

4-5 (scale 1-5) wet / 4-5 (scale 1-5) dry

Resistenza alla luce

AATCC 16.2 opt.1 or 16.3 opt. 3

5 (scale 1-5)

ISO 105 B02

5 (scale 1-8)

Resistenza al taglio cucitura

ASTM D4034

88 lbs warp / 126 lbs weft

ISO 13936-2

4 mm warp / 3 mm weft

Resistenza alla trazione

ASTM D5034

83 lbs warp / 146 lbs weft

ISO 13934-1

430 N warp / 770 N weft

Etichette



USCG -
EU MRA
0038



STANDARD
100
1207035
Centexbel

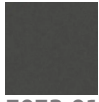
Cura & Manutenzione



Care dry clean only

Monte

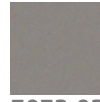
7073.01 – 7073.16



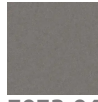
7073.01



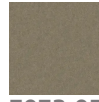
7073.02



7073.03



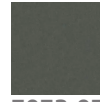
7073.04



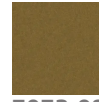
7073.05



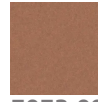
7073.06



7073.07



7073.08



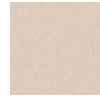
7073.09



7073.10



7073.11



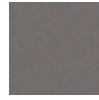
7073.12



7073.13



7073.14



7073.15



7073.16