

Monte

7073.01 – 7073.16



Produit

Tissus d'ameublement

Description

Tissu d'ameublement en velours mohair durable avec un poil extrêmement long certifié Cradle to Cradle® Bronze en 16 couleurs mates

Composition

100% mohair (base: coton)

Largeur

± 140 cm, ± 55 inches

Poids

± 1215 gr/m², ± 39 oz/yd²

Non feu

EN 1021/1-2 , Pass

BS 5852 , Crib 5

NF P 92/503-507 or NF D 60-013 , M2

DIN 4102 , B2

Cal TB 117-2013, section 1 , Pass

IMO 2010 FTP part 8 , Pass

NFPA 260 , Class 1

Résistance à l'abrasion

ISO 12947-2 , 45.000 rubs Martindale

ASTM D3597/D4157 (#10 cotton duck) , 100.000 double rubs Wyzenbeek

Boulochage

ISO 12945-2

4-5 (scale 1-5)

ASTM D3511

5 (scale 1-5)

Résistance au frottement

ISO 105 X12

wet 4-5 (scale 1-5) / dry 4-5 (scale 1-5)

AATCC 8

wet 5 (scale 1-5) / dry 5 (scale 1-5)

Solidité lumière

ISO 105 B02

5 (scale 1-8)

AATCC 16.2 opt.1 or 16.3 opt. 3

5 (scale 1-5)

Résistance au glissement à la couture

ISO 13936-2

warp 4 mm / weft 3 mm

ASTM D4034

warp 88 lbs / weft 126 lbs

Résistance à la traction

ISO 13934-1

warp 430 N / weft 770 N

ASTM D5034

warp 83 lbs / weft 146 lbs

Étiquettes



USCG -
EU MRA
0038



STANDARD
100
1207035
Centexbel



Entretien & Maintenance



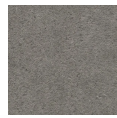
Rétrécissement

Monte

7073.01 – 7073.16



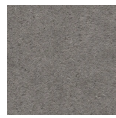
7073.01



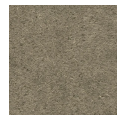
7073.02



7073.03



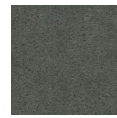
7073.04



7073.05



7073.06



7073.07



7073.08



7073.09



7073.10



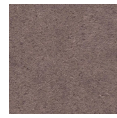
7073.11



7073.12



7073.13



7073.14



7073.15



7073.16