

Monte

7073.01 – 7073.16



Producto

Tapicerías

Descripción

Tela para tapicería de terciopelo de mohair sostenible con certificado Cradle to Cradle® Bronze de pelo extremadamente alto en 16 colores mate

Composición

100% mohair (base: algodón)

Anchura

± 140 cm, ± 55 inches

Peso

± 1215 gr/m², ± 39 oz/yd²

Combustión retardada

BS 5852 , Crib 5

Cal TB 117-2013, section 1 , Pass

DIN 4102 , B2

EN 1021/1-2 , Pass

IMO 2010 FTP part 8 , Pass

NF P 92/503-507 , M2

NFPA 260 , Class 1

Resistencia al desgaste

ASTM D3597/D4157 (#10 cotton duck) ,

100.000 double rubs Wyzenbeek

ISO 12947-2 , 45.000 rubs Martindale

Pilling

ASTM D3511

5 (scale 1-5)

ISO 12945-2

4-5 (scale 1-5)

Resistencia al frotamiento

AATCC 8

5 (scale 1-5) wet / 5 (scale 1-5) dry

ISO 105 X12

4-5 (scale 1-5) wet / 4-5 (scale 1-5) dry

Insensibilidad a la luz

AATCC 16.2 opt.1 or 16.3 opt. 3

5 (scale 1-5)

ISO 105 B02

5 (scale 1-8)

Resistencia al deslizamiento de costuras

ASTM D4034

88 lbs warp / 126 lbs weft

ISO 13936-2

4 mm warp / 3 mm weft

Resistencia a la tensión

ASTM D5034

83 lbs warp / 146 lbs weft

ISO 13934-1

430 N warp / 770 N weft

Etiquetas



USCG -
EU MRA
0038



STANDARD
100
1207035
Centexbel

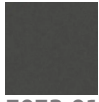
Cuidado & Mantenimiento



Care dry clean only

Monte

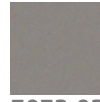
7073.01 – 7073.16



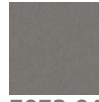
7073.01



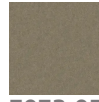
7073.02



7073.03



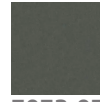
7073.04



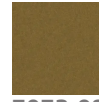
7073.05



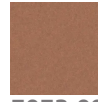
7073.06



7073.07



7073.08



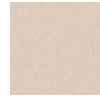
7073.09



7073.10



7073.11



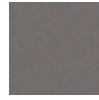
7073.12



7073.13



7073.14



7073.15



7073.16