

Montado

2617.20 - 2617.29



Produto

Revestimento mural

Descrição

**Estrutura uniforme com efeitos metálicos
subtis**

Composição

**60% popa de madeira / 40% poliéster sobre
um suporte em papel**

Largura

± 137 cm, ± 54 inches

Peso

± 394 gr/m², ± 17 oz/yd¹

Resistência ao fogo

**ASTM E84 , Pass, A
EN 13501 , B, s1 - d0**

Marcas de qualidade

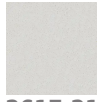


Montado

2617.20 - 2617.29



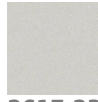
2617.20



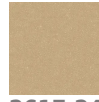
2617.21



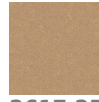
2617.22



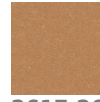
2617.23



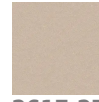
2617.24



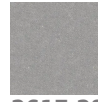
2617.25



2617.26



2617.27



2617.28



2617.29