

Mira

8094.01 - 8094.12



Product
Curtain

Description

A linen-like, natural two-tonal floor-to-ceiling sheer fabric in an open grid weave with a vertical, irregular dark-yarn effect

Composition

63% recycled polyester FR / 37% polyester FR

Width

± 307 cm, ± 121 inches

Weight

± 375 gr/m², ± 12 oz/yd²

Visual & Thermal comfort

EN 410/EN 14501

Test available

Flame retardancy

BS 5867-2 , Type C

CAN/ULC S109 , Pass

DIN 4102 , B1

EN 13773 , Class 1

IMO 2010 FTP part 7 , Pass

NF P 92/503-507 , M1

NFPA 701 (meth. 1 or 2) , Pass

Übereinstimmung , Pass

UNI VF 8456-8457 , Classe 1

Colorfastness to crocking

AATCC 8 (solids)

4.5 (scale 1-5) wet / 4.5 (scale 1-5) dry

ISO 105-X12

4-5 (scale 1-5) wet / 4-5 (scale 1-5) dry

Colorfastness to light

AATCC 16.2 option 1 or 16.3 opt 3

5 (scale 1-5)

ISO 105-B02

6 (scale 1-8)

Seam slippage

ASTM D434

17.5 warp / 21.5 weft

ISO 13936-2

4.6 mm warp / 3.3 mm weft

Labels



USCG -
EU MRA
0038



STANDARD
100
S21-3365
Hohenstein HTTI



Baustoffklasse schwerentflammbar
DIN 4102, B1

Care & Maintenance



Shrinkage

Shrinkage 50°

-2% warp / -1.5% weft

Mira

8094.01 - 8094.12



8094.01



8094.02



8094.03



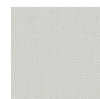
8094.04



8094.05



8094.06



8094.07



8094.08



8094.09



8094.10



8094.11



8094.12