

Melvin

1017.01 - 1017.27



Produto
Revestimento mural

Descrição
Estilo betão

Composição
Camada vinílica estampada com tintas à base de água e base de algodão

Largura
± 130 cm, ± 51/52 inches

Peso
± 350 gr/m², ± 15 oz/yd²

Resistência ao fogo
ASTM E84 , Pass, A
EN 13501 , B, s1 - d0
IMO 2010 FTP part 2-5 , Pass
NFPA 286 , Pass

Marcas de qualidade

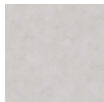


USCG -
EU MIRA
0038

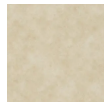


Melvin

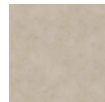
1017.01 - 1017.27



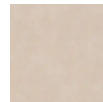
1017.01



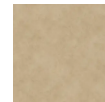
1017.02



1017.03



1017.04



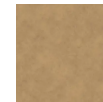
1017.05



1017.06



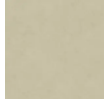
1017.07



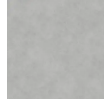
1017.08



1017.09



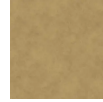
1017.10



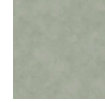
1017.11



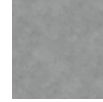
1017.12



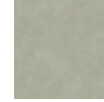
1017.13



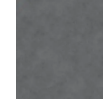
1017.14



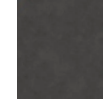
1017.15



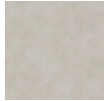
1017.16



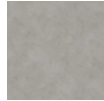
1017.17



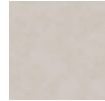
1017.18



1017.19



1017.20



1017.21



1017.22



1017.23



1017.24



1017.25



1017.26



1017.27