

# Melvin

1017.01 - 1017.27



**Produkt**  
Wandbekleidung

**Beschreibung**  
Beton-Look

**Zusammensetzung**  
Vinyl-Deckschicht bedruckt mit Farben auf Wasserbasis,  
Baumwollträger

**Breite**  
± 130 cm, ± 51/52 inches

**Gewicht**  
± 350 gr/m<sup>2</sup>, ± 15 oz/yd<sup>2</sup>

**Brandschutzklasse**  
ASTM E84 , Pass, A  
EN 13501 , B, s1 - d0  
IMO 2010 FTP part 2-5 , Pass  
NFPA 286 , Pass

**Labels**



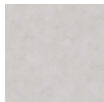
USCG -  
EU MIRA  
0038



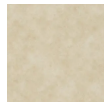
# Melvin

1017.01 - 1017.27

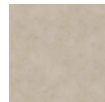
---



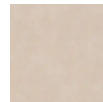
1017.01



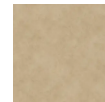
1017.02



1017.03



1017.04



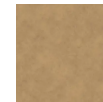
1017.05



1017.06



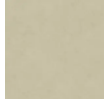
1017.07



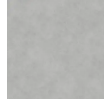
1017.08



1017.09



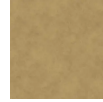
1017.10



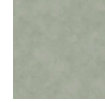
1017.11



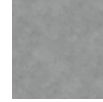
1017.12



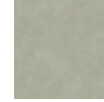
1017.13



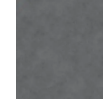
1017.14



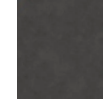
1017.15



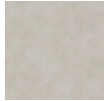
1017.16



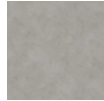
1017.17



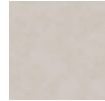
1017.18



1017.19



1017.20



1017.21



1017.22



1017.23



1017.24



1017.25



1017.26



1017.27