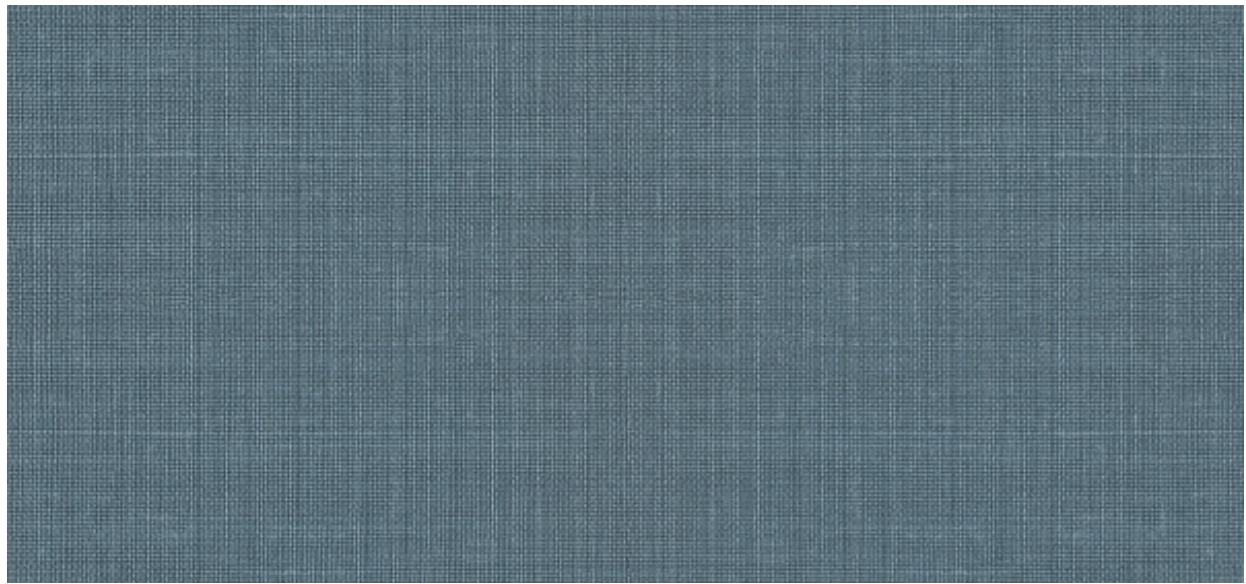


Luxolin

2620.10 – 2620.19



Produto

Revestimento mural

Descrição

Estrutura irregular em linho, com efeito de lã entrelaçada, em cores terra

Composição

100% linho sobre um suporte em papel

Largura

± 137 cm, ± 54 inches

Peso

± 518 gr/m², ± 23 oz/yd¹

Resistência ao fogo

**EN 13501 , B, s1 - d0
ASTM E84 , Pass, A**

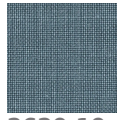
Marcas de qualidade



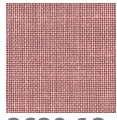
EN 15102

Luxolin

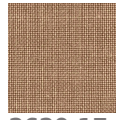
2620.10 – 2620.19



2620.19



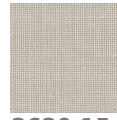
2620.18



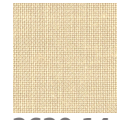
2620.17



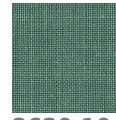
2620.16



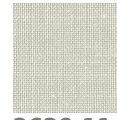
2620.15



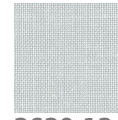
2620.14



2620.10



2620.11



2620.12



2620.13