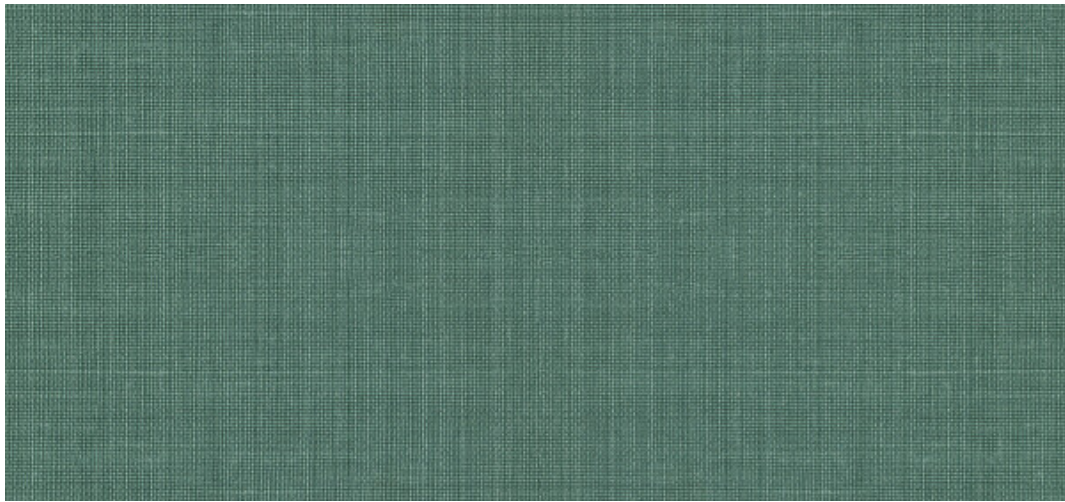


Luxolin

2620.10 – 2620.19



Producto

Revestimiento mural

Peso

± 518 gr/m², ± 23 oz/yd¹

Descripción

Estructura de lino irregular con un efecto delicado de hilos de colores en tonos tierra

Combustión retardada

**ASTM E84 , Pass, A
EN 13501 , B, s1 - d0**

Composición

100% lino en soporte de papel

Etiquetas

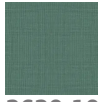
Anchura

± 137 cm, ± 54 inches



Luxolin

2620.10 – 2620.19



2620.10



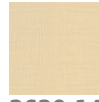
2620.11



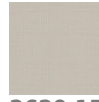
2620.12



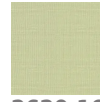
2620.13



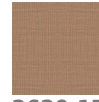
2620.14



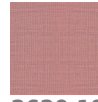
2620.15



2620.16



2620.17



2620.18



2620.19