

# Linosa

2106.01 – 2106.09



## Produkt

**Wandbekleidung**

## Beschreibung

**Wandbekleidung aus biobasiertem Leinen in handgewebter Optik in neutralen Tönen**

## Zusammensetzung

**100% linen on a paper backing**

## Breite

**± 137 cm, ± 54 inches**

## Gewicht

**± 500 gr/m<sup>2</sup>, ± 22 oz/yd<sup>1</sup>**

## Brandschutzklasse

**EN 13501 , B, s1 - d0**

**ASTM E84 , Pass, A**

## Lichteuchtigkeit

**ISO 105-B02**

7-8 (scale 1-8)

**AATCC 16.2 opt. 1 or 3 / FTM 191A, meth. 5660**

5 (scale 1-5)

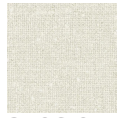
## Labels



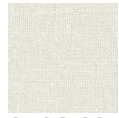
# Linosa

2106.01 – 2106.09

---



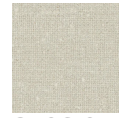
2106.01



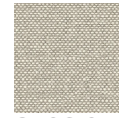
2106.02



2106.03



2106.04



2106.05



2106.06



2106.07



2106.08



2106.09