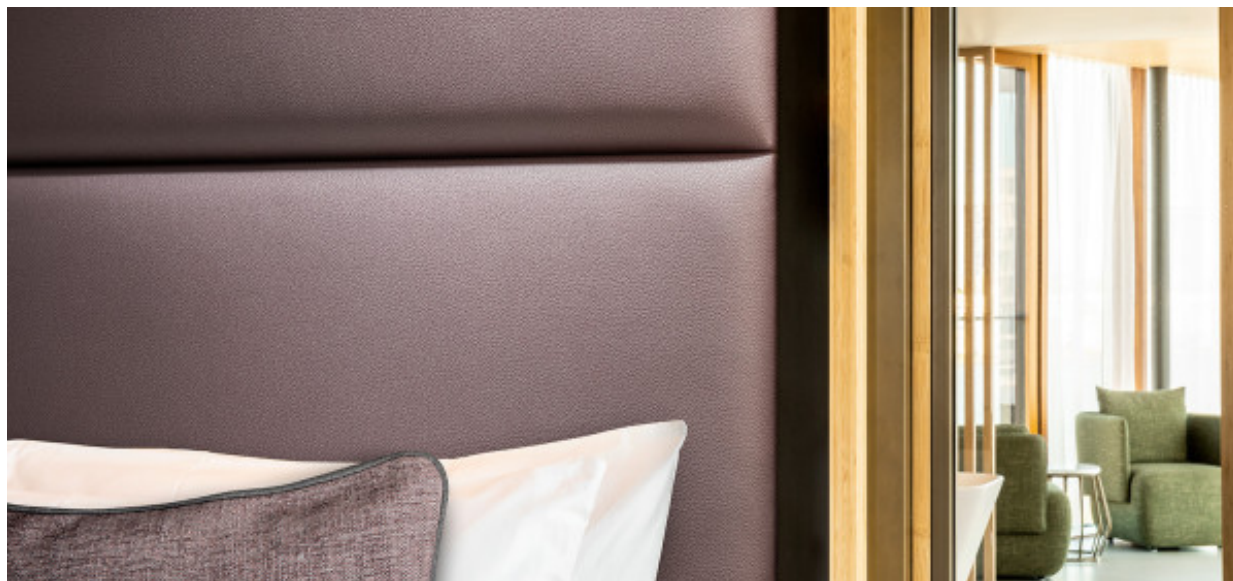


Leone Plus

7054.01 - 7054.26



Produto

Revestimento para mobiliário

Descrição

Relevo em couro liso

Composição

Espuma vinílica, base de malha de algodão/poliéster

Largura

± 137-140 cm, ± 54-55 inches

Peso

± 800 gr/m², ± 36 oz/yd¹

Resistência ao fogo

EN 1021/1-2 , Pass

BS 5852 , Crib 5

NF P 92/503-507 or NF D 60-013 , M2

DIN 4102 , B2

Cal TB 117-2013, section 1 , Pass

IMO 2010 FTP part 8 , Pass

NFPA 260 , Class 1

Desgaste à abrasão

ISO 12947-2 , > 300.000 rubs Martindale

ASTM D3597/D4157 (#10 cotton duck) , 100.000 double rubs Wyzenbeek

Resistência à fricção

ISO 105 X12

wet 5 (scale 1-5) / dry 5 (scale 1-5)

AATCC 8

wet 5 (scale 1-5) / dry 5 (scale 1-5)

Resistência à luz

ISO 105 B02

7 (scale 1-8)

Marcas de qualidade

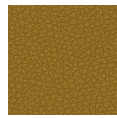


USCG –
EU MRA
0038

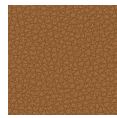


Leone Plus

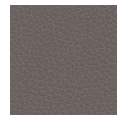
7054.01 - 7054.26



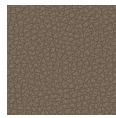
7054.01



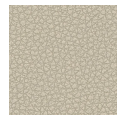
7054.02



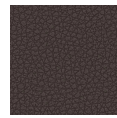
7054.03



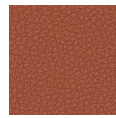
7054.04



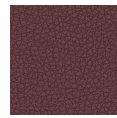
7054.05



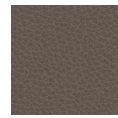
7054.06



7054.07



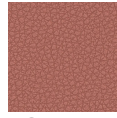
7054.08



7054.09



7054.10



7054.11



7054.12



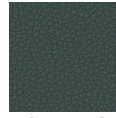
7054.13



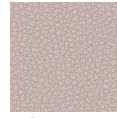
7054.14



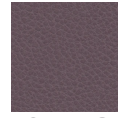
7054.15



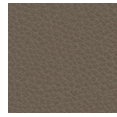
7054.16



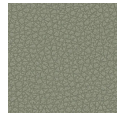
7054.17



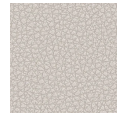
7054.18



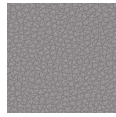
7054.19



7054.20



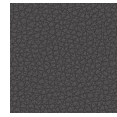
7054.21



7054.22



7054.23



7054.24



7054.25



7054.26