

Kai

2616.80 - 2616.84



Product
Wallcovering

Description
Leather look with a graphic dot in metallic

Composition
70% woodpulp / 30% polyester on a paper backing

Width
± 137 cm, ± 54 inches

Weight
± 161 gr/m², ± 7 oz/yd¹

Pattern repeat width
2,9 cm, 1,1 inches

Pattern repeat height
2,9 cm, 1,1 inches

Flame retardancy
**ASTM E84 , Pass, A
EN 13501 , B, s2 - d0**

Labels

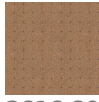


EN 15102

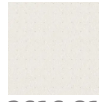


Kai

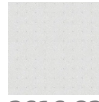
2616.80 - 2616.84



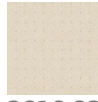
2616.80



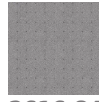
2616.81



2616.82



2616.83



2616.84