

# Jarvis

1096.01 - 1096.21



## Produit

**Revêtement mural**

## Description

**Textile riche aux accents métalliques chics**

## Composition

**Couche vinyle, impression au moyen d'encre à base d'eau, support en coton**

## Largeur

**± 130 cm, ± 51 inches**

## Poids

**± 440 gr/m<sup>2</sup>, ± 18 oz/yd<sup>1</sup>**

## Non feu

**ASTM E84 , Pass, A  
EN 13501 , B, s2 - d0**

## Solidité lumière

**ISO 105-B02  
Light 7 / dark 7 (scale 1-8)**

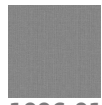
## Étiquettes



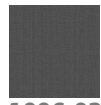
# Jarvis

1096.01 - 1096.21

---



1096.01



1096.02



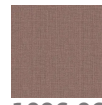
1096.03



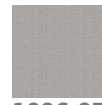
1096.04



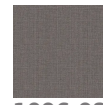
1096.05



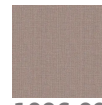
1096.06



1096.07



1096.08



1096.09



1096.10



1096.11



1096.12



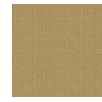
1096.13



1096.14



1096.15



1096.16



1096.17



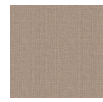
1096.18



1096.19



1096.20



1096.21