

# Harding

7070.01 – 7070.08



## Product

**Meubelbekleding**

## Omschrijving

**Tweekleurige twill meubelstof gemaakt van 100% gerecycled plastic afval**

## Samenstelling

**100% recycled polyester FR**

## Breedte

**± 151 cm, ± 59 inches**

## Gewicht

**± 660 gr/m<sup>2</sup>, ± 21 oz/yd<sup>2</sup>**

## Brandwerendheid

**EN 1021/1-2 , Pass**

**BS 5852 , Crib 5**

**DIN 4102 , B1**

**Cal TB 117-2013, section 1 , Pass**

**IMO 2010 FTP part 8 , Pass**

**NFPA 260 , Class 1**

## Slijtvastheid

**ISO 12947-2 , 130.000 rubs Martindale  
ASTM D3597/D4157 (#10 cotton duck) , 100.000  
double rubs Wyzenbeek**

## Pilling

**ISO 12945-2**

4-5 (scale 1-5)

## Wrijftechtheid

**ISO 105 X12**

wet 4-5 (scale 1-5) / dry 4-5 (scale 1-5)

## Lichtechtheid

**ISO 105 B02**

6 (scale 1-8)

## Naadschuifweerstand

**ISO 13936-2**

warp 3 mm / weft 2 mm

## Treksterkte

**ISO 13934-1**

warp 1220 N / weft 2500 N

## Keurmerken



USCG -  
EU MRA  
0038



STANDARD  
100  
521-3365  
Hohenstein HTTI

## Reiniging & Onderhoud



## Krimp

Shrinkage 70° warp -2% / weft -2%

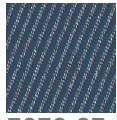
# Harding

7070.01 – 7070.08

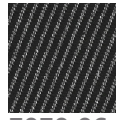
---



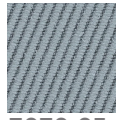
7070.08



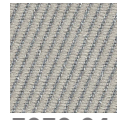
7070.07



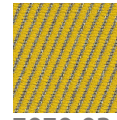
7070.06



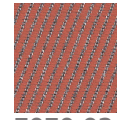
7070.05



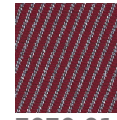
7070.04



7070.03



7070.02



7070.01