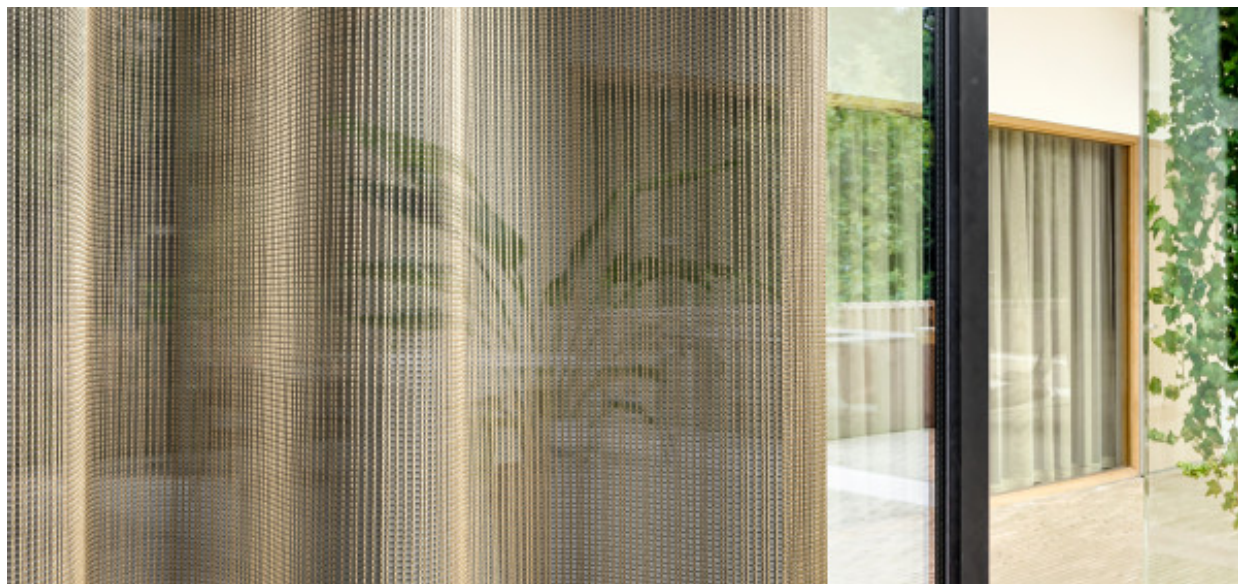


Fogo

8051.01 - 8051.16



产品
窗帘

描述
半透明带竖向效果

成分
69% recycled polyester FR / 31% polyester FR

宽幅
± 304 cm, ± 120 inches

重量
± 237 gr/m², ± 8 oz/yd²

视觉及热舒适控制
EN 410/EN 14501
Test available

阻燃
NFPA 701 (meth. 1 or 2) , Pass
EN 13773 , Class 1
BS 5867-2 , Type C
NF P 92/503-507 , M1
DIN 4102 , B1
Übereinstimmung , Pass
UNI VF 8456-8457 , Classe 1
CAN/ULC S109 , Pass
IMO 2010 FTP part 7 , Pass

耐摩擦褪色
ISO 105-X12
wet 4-5 (scale 1-5) / dry 4-5 (scale 1-5)
AATCC 8 (solids)
wet 5 (scale 1-5) / dry 5 (scale 1-5)

耐光照褪色
ISO 105-B02
6 (scale 1-8)
AATCC 16.2 option 1 or 16.3 opt 3
5 (scale 1-5)

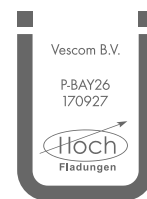
标签



USCG -
EU MRA
0038



STANDARD
100
S07-0023
Hohenstein HTTI



Baustoffklasse schwerentflammbar
DIN 4102, B1

保养与维护



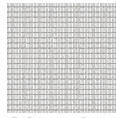
收缩率

Shrinkage 30° warp -3.1% / weft -0.5%

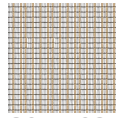
Shrinkage 70° warp -3.8% / weft -0.8%

Fogo

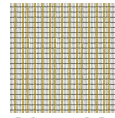
8051.01 - 8051.16



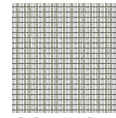
8051.01



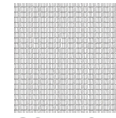
8051.02



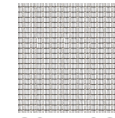
8051.03



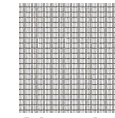
8051.04



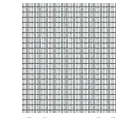
8051.05



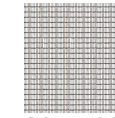
8051.06



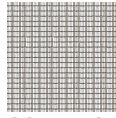
8051.07



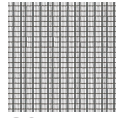
8051.08



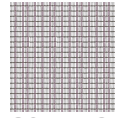
8051.09



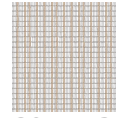
8051.10



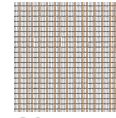
8051.11



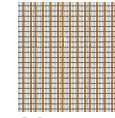
8051.12



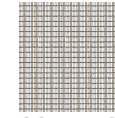
8051.13



8051.14



8051.15



8051.16