

Fiero

2625.00 - 2625.08



Produkt

Wandbekleidung

Beschreibung

Textile Wandbekleidung mit einem regelmäßigen, gitterartigen Muster und einem subtilen, leinenähnlichen Ton-in-Ton-Kontrast

Zusammensetzung

54% Viskose / 26% Leinen / 20% recyceltes Polyester auf einem Papierträger

Breite

± 137 cm, ± 54 inches

Gewicht

± 647 gr/m¹, ± 472 gr/m², ± 21 oz/yd¹

Brandschutzklasse

**ASTM E84 , Pass, A
EN 13501 , B, s2 - d0**

Lichtechtheit

ISO 105-B02

6 (scale 1-8)

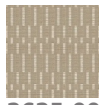
Labels

CE EN 15102

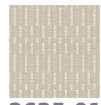


Fiero

2625.00 - 2625.08



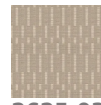
2625.00



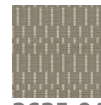
2625.01



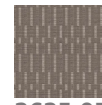
2625.02



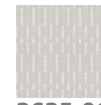
2625.03



2625.04



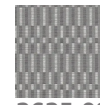
2625.05



2625.06



2625.07



2625.08