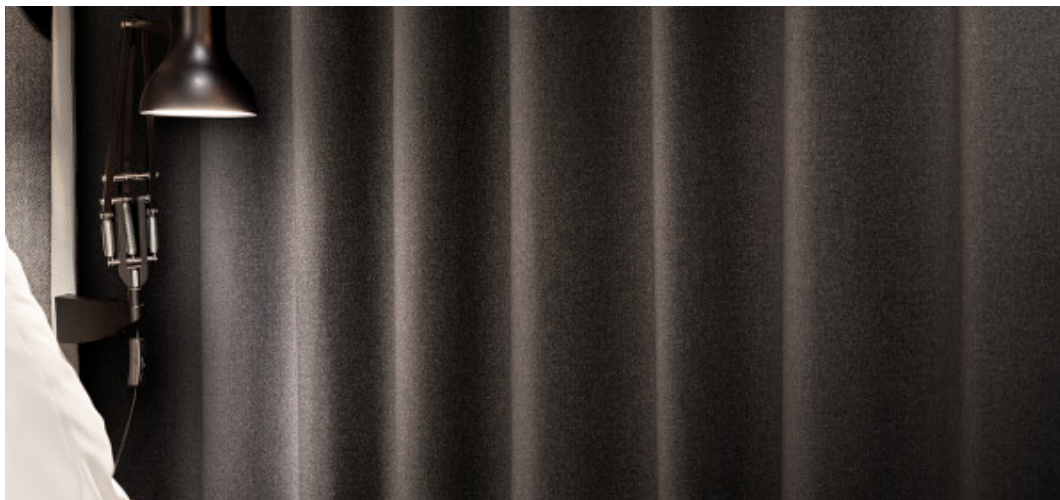


# Elba

8069.01 - 8069.20



## Product

**Curtain**

## Description

**Structured melange look curtain fabric, black out**

## Composition

**100% fire retarding polyester with acrylic backing**

## Width

**± 277 cm, ± 109 inches**

## Weight

**± 1075 gr/m<sup>2</sup>, ± 35 oz/yd<sup>2</sup>**

## Sound absorption

**ISO 354, alpha w**  
0.35

## Visual & Thermal comfort

**AATCC 148**

Test available

**EN 410/EN 14501**

Test available

## Flame retardancy

**BS 5867-2 , Type B**

**CAN/ULC S109 , Pass**

**DIN 4102 , B1**

**EN 13773 , Class 1**

**IMO 2010 FTP part 7 , Pass**

**NFPA 701 (meth. 1 or 2) , Pass**

**Übereinstimmung , Pass**

**UNI VF 8456-8457 , Classe 1**

## Colorfastness to crocking

**AATCC 8 (solids)**

5 (scale 1-5) wet / 5 (scale 1-5) dry

**ISO 105-X12**

4-5 (scale 1-5) wet / 4-5 (scale 1-5) dry

## Colorfastness to light

**AATCC 16.2 option 1 or 16.3 opt 3**

2.5 (scale 1-5)

**ISO 105-B02**

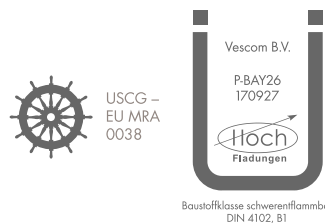
5 (scale 1-8)

## Seam slippage

**ASTM D434**

44 lbs warp / 49.5 lbs weft

## Labels



## Care & Maintenance



## Shrinkage

**Shrinkage 30°**

-0.9% warp / -0.6% weft

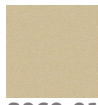
**Shrinkage 70°**

-1.5% warp / -1.2% weft

# Elba

8069.01 - 8069.20

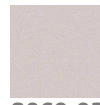
---



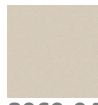
8069.01



8069.02



8069.03



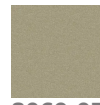
8069.04



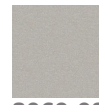
8069.05



8069.06



8069.07



8069.08



8069.09



8069.10



8069.11



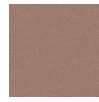
8069.12



8069.13



8069.14



8069.15



8069.16



8069.17



8069.18



8069.19



8069.20