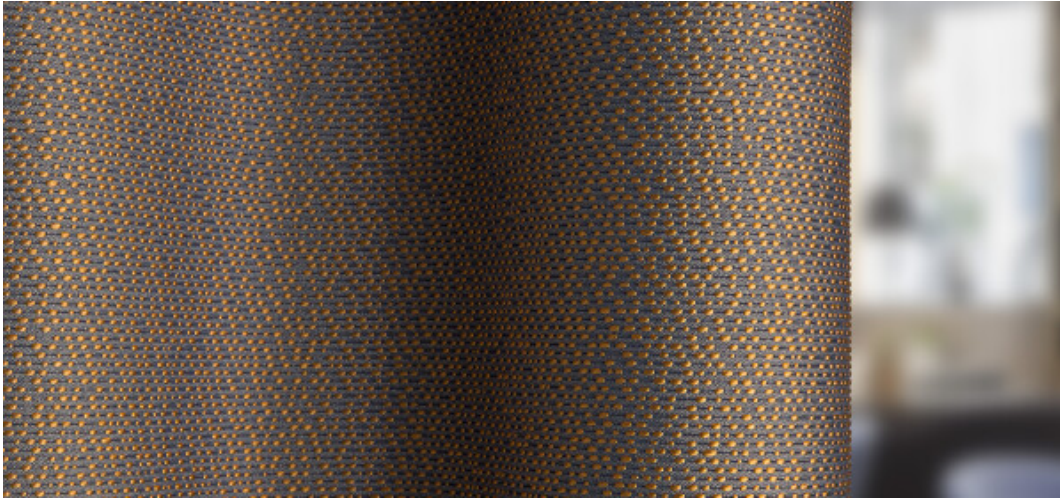


Delos

8082.01 - 8082.24



Produit

Tissus pour rideaux

Description

Tissage structuré 3D intégral avec un effet fil brillant bicolore

Composition

32% recycled polyester FR / 68% polyester FR

Largeur

± 136 cm, ± 54 inches

Poids

± 354 gr/m², ± 11 oz/yd²

Confort Visuel & Thermique

EN 410/EN 14501

Test available

Non feu

BS 5867-2 , Type C

CAN/ULC S109 , Pass

DIN 4102 , B1

EN 13773 , Class 1

IMO 2010 FTP part 7 , Pass

NF P 92/503-507 , M1

NFPA 701 (meth. 1 or 2) , Pass

Übereinstimmung , Pass

UNI VF 8456-8457 , Classe 1

Résistance au frottement

AATCC 8 (solids)

5 (scale 1-5) wet / 5 (scale 1-5) dry

ISO 105-X12

4-5 (scale 1-5) wet / 4-5 (scale 1-5) dry

Solidité lumière

AATCC 16.2 option 1 or 16.3 opt 3

4.5 (scale 1-5)

ISO 105-B02

6 (scale 1-8)

Résistance au glissement à la couture

ASTM D434

46 lbs warp / 65 lbs weft

ISO 13936-2

3.6 mm warp / 3.6 mm weft

Étiquettes



USCG -
EU MRA
0038



STANDARD
100
S07-0023
Hohenstein HTTI



Baustoffklasse schwerentflammbar
DIN 4102, B1

Entretien & Maintenance



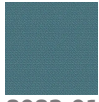
Rétrécissement

Shrinkage 70°

-2.1% warp / -1.5% weft

Delos

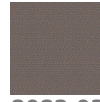
8082.01 - 8082.24



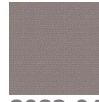
8082.01



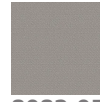
8082.02



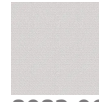
8082.03



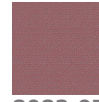
8082.04



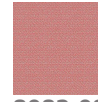
8082.05



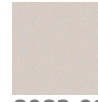
8082.06



8082.07



8082.08



8082.09



8082.10



8082.11



8082.12



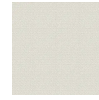
8082.13



8082.14



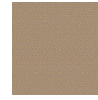
8082.15



8082.16



8082.17



8082.18



8082.19



8082.20



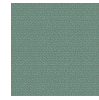
8082.21



8082.22



8082.23



8082.24