

Cyprus

7038.01 - 7038.16



Producto

Tapicerías

Descripción

Imagen de tejido bicolor abierto sobre superficie más oscura

Composición

Espuma de vinilo, soporte de algodón/poliéster

Anchura

± 137-140 cm, ± 54-55 inches

Peso

± 800 gr/m², ± 36 oz/yd¹

Combustión retardada

BS 5852 , Crib 5

Cal TB 117-2013, section 1 , Pass

DIN 4102 , B2

EN 1021/1-2 , Pass

IMO 2010 FTP part 8 , Pass

NF P 92/503-507 , M2

NFPA 260 , Class 1

Resistencia al desgaste

**ASTM D3597/D4157 (#10 cotton duck) ,
100.000 double rubs Wyzenbeek
ISO 12947-2 , > 300.000 rubs Martindale**

Resistencia al frotamiento

AATCC 8

5 (scale 1-5) wet / 5 (scale 1-5) dry

ISO 105 X12

5 (scale 1-5) wet / 5 (scale 1-5) dry

Insensibilidad a la luz

ISO 105 B02

7 (scale 1-8)

Resistencia a la tensión

ASTM D5034

113 lbs warp / 90 lbs weft

Etiquetas



USCG –
EU MRA
0038

vinyl^{plus}
COMMITTED TO
SUSTAINABLE DEVELOPMENT

Cyprus

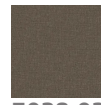
7038.01 - 7038.16



7038.01



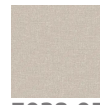
7038.02



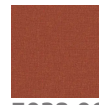
7038.03



7038.04



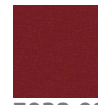
7038.05



7038.06



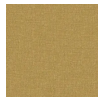
7038.07



7038.08



7038.09



7038.10



7038.11



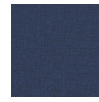
7038.12



7038.13



7038.14



7038.15



7038.16