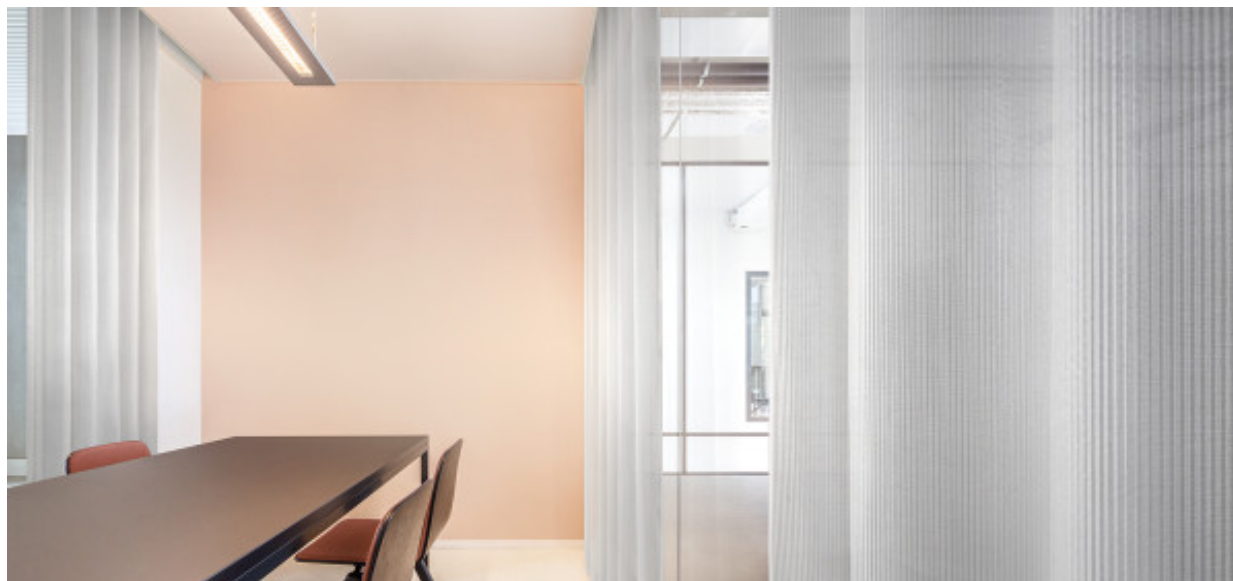


# Carmen

8024.01 - 8024.09



**Product**  
**Curtain**

**Description**  
**3-dimensional rib lengthwise with the brilliance of melting ice**

**Composition**  
**100% flame retardant polyester**

**Width**  
**± 150 cm, ± 59 inches**

**Weight**  
**± 136 gr/m<sup>2</sup>, ± 4 oz/yd<sup>2</sup>**

**Sound absorption**  
**ISO 354, alpha w**  
0.50 (pleated)  
**ASTM C423, nrc**  
0.30

**Visual & Thermal comfort**  
**EN 410/EN 14501**  
Test available

**Flame retardancy**  
**NFPA 701 (meth. 1 or 2) , Pass**  
**EN 13773 , Class 1**  
**BS 5867-2 , Type C**  
**NF P 92/503-507 , M1**  
**DIN 4102 , B1**  
**Übereinstimmung , Pass**  
**UNI VF 8456-8457 , Classe 1**  
**CAN/ULC S109 , Pass**  
**IMO 2010 FTP part 7 , Pass**

**Colorfastness to crocking**  
**ISO 105-X12**  
wet 4-5 (scale 1-5) / dry 4-5 (scale 1-5)  
**AATCC 8 (solids)**  
wet 5 (scale 1-5) / dry 5 (scale 1-5)

**Colorfastness to light**  
**ISO 105-B02**  
5 (scale 1-8)  
**AATCC 16.2 option 1 or 16.3 opt 3**  
4 (scale 1-5)

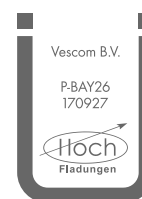
**Labels**



USCG -  
EU MRA  
0038



STANDARD  
100  
S07-0023  
Hohenstein HTTI



Baustoffklasse schwerentflammbar  
DIN 4102, B1

**Care & Maintenance**



**Shrinkage**

Shrinkage 30° warp -0.3% / weft -0.3%

Shrinkage 70° warp -0.6% / weft -0.4%

# Carmen

8024.01 - 8024.09

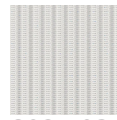
---



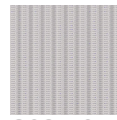
8024.01



8024.02



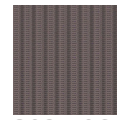
8024.03



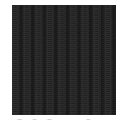
8024.04



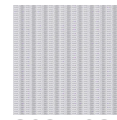
8024.05



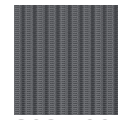
8024.06



8024.07



8024.08



8024.09