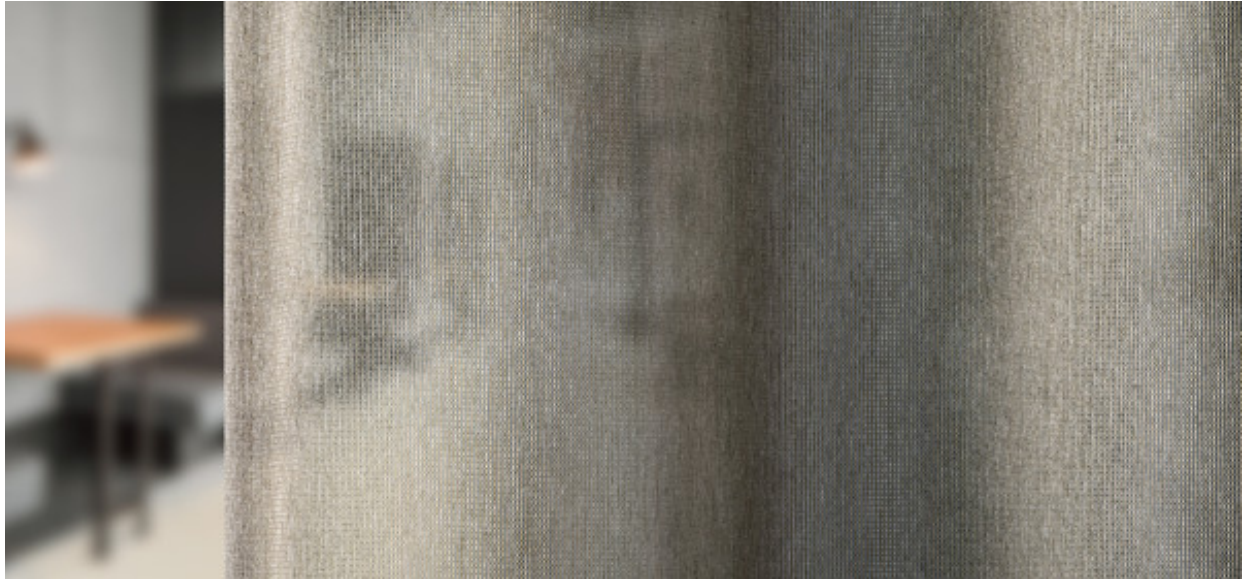


Capri

8056.01 - 8056.12



Produit

Tissus pour rideaux

Description

Rideau acoustique semi-transparent sans motif

Composition

100% polyester ignifuge

Largeur

± 306 cm, ± 120 inches

Poids

± 303 gr/m², ± 10 oz/yd²

Absorption acoustique

ISO 354, alpha w

0.65 (pleated)

ASTM C423, nrc

0.70

Confort Visuel & Thermique

EN 410/EN 14501

Test available

Non feu

NFPA 701 (meth. 1 or 2) , Pass

EN 13773 , Class 1

BS 5867-2 , Type C

NF P 92/503-507 , M1

DIN 4102 , B1

Übereinstimmung , Pass

UNI VF 8456-8457 , Classe 1

CAN/ULC S109 , Pass

Résistance au frottement

ISO 105-X12

wet 4-5 (scale 1-5) / dry 4-5 (scale 1-5)

AATCC 8 (solids)

wet 5 (scale 1-5) / dry 5 (scale 1-5)

Solidité lumière

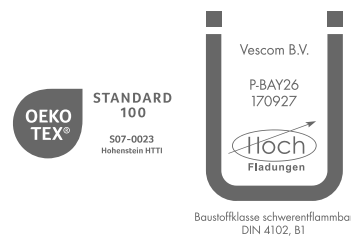
ISO 105-B02

6 (scale 1-8)

AATCC 16.2 option 1 or 16.3 opt 3

4-5 (scale 1-5)

Étiquettes



Entretien & Maintenance



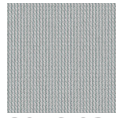
Rétrécissement

Shrinkage 30° warp 0% / weft -0.6%

Shrinkage 70° warp -0.6% / weft -1.2%

Capri

8056.01 - 8056.12



8056.03



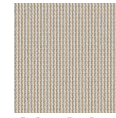
8056.01



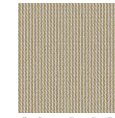
8056.02



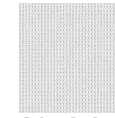
8056.04



8056.05



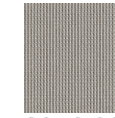
8056.06



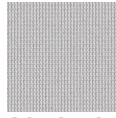
8056.07



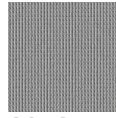
8056.08



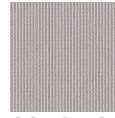
8056.09



8056.10



8056.11



8056.12