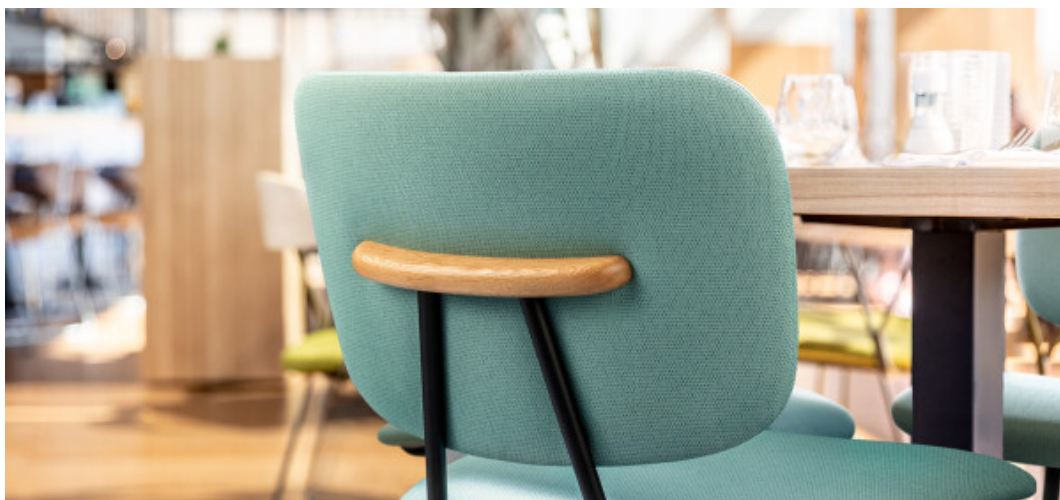


# Arrow

7055.01 - 7055.23



## Produit

**Tissus d'ameublement**

## Description

**Structure tissu bicolore aux couleurs lumineuses et fraîches**

## Composition

**Enduction vinylique, tricot polyester/coton**

## Largeur

**± 137-140 cm, ± 54-55 inches**

## Poids

**± 800 gr/m<sup>2</sup>, ± 36 oz/yd<sup>1</sup>**

## Non feu

**BS 5852 , Crib 5**

**Cal TB 117-2013, section 1 , Pass**

**DIN 4102 , B2**

**EN 1021/1-2 , Pass**

**IMO 2010 FTP part 8 , Pass**

**NF P 92/503-507 , M2**

**NFPA 260 , Class 1**

## Résistance à l'abrasion

**ASTM D3597/D4157 (#10 cotton duck) ,  
100.000 double rubs Wyzenbeek  
ISO 12947-2 , > 300.000 rubs Martindale**

## Résistance au frottement

**AATCC 8**

5 (scale 1-5) wet / 5 (scale 1-5) dry

**ISO 105 X12**

5 (scale 1-5) wet / 5 (scale 1-5) dry

## Solidité lumière

**ISO 105 B02**

7 (scale 1-8)

## Résistance à la traction

**ASTM D5034**

113 lbs warp / 90 lbs weft

## Étiquettes



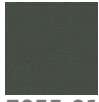
USCG –  
EU MRA  
0038

**vinyl** plus  
COMMITTED TO  
SUSTAINABLE DEVELOPMENT

# Arrow

7055.01 - 7055.23

---



7055.01



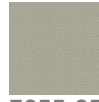
7055.02



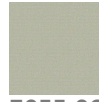
7055.03



7055.04



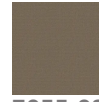
7055.05



7055.06



7055.07



7055.08



7055.09



7055.10



7055.11



7055.12



7055.13



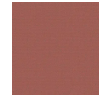
7055.14



7055.15



7055.16



7055.17



7055.18



7055.19



7055.20



7055.21



7055.22



7055.23