

Arches

7066.01 - 7066.17



Produto

Revestimento para mobiliário

Descrição

Estrutura de trama têxtil dinâmica

Composição

Espuma vinílica, base de malha de algodão/poliéster

Largura

± 137-140 cm, ± 54-55 inches

Peso

± 800 gr/m², ± 36 oz/yd¹

Resistência ao fogo

BS 5852 , Crib 5

Cal TB 117-2013, section 1 , Pass

DIN 4102 , B2

EN 1021/1-2 , Pass

IMO 2010 FTP part 8 , Pass

NF P 92/503-507 , M2

NFPA 260 , Class 1

Desgaste à abrasão

**ASTM D3597/D4157 (#10 cotton duck) ,
100.000 double rubs Wyzenbeek
ISO 12947-2 , > 300.000 rubs Martindale**

Resistência à fricção

AATCC 8

5 (scale 1-5) wet / 5 (scale 1-5) dry

ISO 105 X12

5 (scale 1-5) wet / 5 (scale 1-5) dry

Resistência à luz

ISO 105 B02

7 (scale 1-8)

Marcas de qualidade

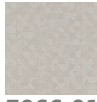


USCG –
EU MRA
0038

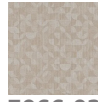
vinyl ^{plus}
COMMITTED TO
SUSTAINABLE DEVELOPMENT

Arches

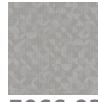
7066.01 - 7066.17



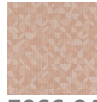
7066.01



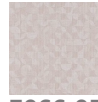
7066.02



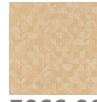
7066.03



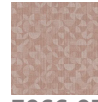
7066.04



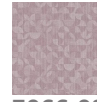
7066.05



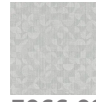
7066.06



7066.07



7066.08



7066.09



7066.10



7066.11



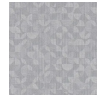
7066.12



7066.13



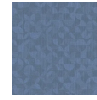
7066.14



7066.15



7066.16



7066.17