

# Arches

7066.01 - 7066.17



## Produit

**Tissus d'ameublement**

## Description

**Structure de tissage textile dynamique**

## Composition

**Enduction vinylique, tricot polyester/coton**

## Largeur

**± 137-140 cm, ± 54-55 inches**

## Poids

**± 800 gr/m<sup>2</sup>, ± 36 oz/yd<sup>1</sup>**

## Non feu

**BS 5852 , Crib 5**

**Cal TB 117-2013, section 1 , Pass**

**DIN 4102 , B2**

**EN 1021/1-2 , Pass**

**IMO 2010 FTP part 8 , Pass**

**NF P 92/503-507 , M2**

**NFPA 260 , Class 1**

## Résistance à l'abrasion

**ASTM D3597/D4157 (#10 cotton duck) ,  
100.000 double rubs Wyzenbeek  
ISO 12947-2 , > 300.000 rubs Martindale**

## Résistance au frottement

**AATCC 8**

5 (scale 1-5) wet / 5 (scale 1-5) dry

**ISO 105 X12**

5 (scale 1-5) wet / 5 (scale 1-5) dry

## Solidité lumière

**ISO 105 B02**

7 (scale 1-8)

## Étiquettes



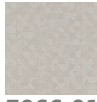
USCG –  
EU MRA  
0038

vinyl <sup>plus</sup>  
COMMITTED TO  
SUSTAINABLE DEVELOPMENT

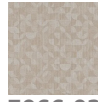
# Arches

7066.01 - 7066.17

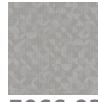
---



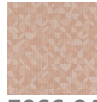
7066.01



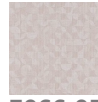
7066.02



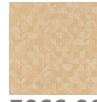
7066.03



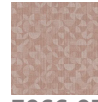
7066.04



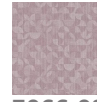
7066.05



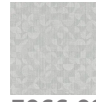
7066.06



7066.07



7066.08



7066.09



7066.10



7066.11



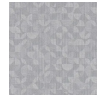
7066.12



7066.13



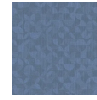
7066.14



7066.15



7066.16



7066.17