

Arches

7066.01 - 7066.17



Producto
Tapicerías

Descripción
Estructura textil dinámica

Composición
Espuma de vinilo, soporte de algodón/poliéster

Anchura
± 137-140 cm, ± 54-55 inches

Peso
± 800 gr/m², ± 36 oz/yd¹

Combustión retardada
BS 5852 , Crib 5
Cal TB 117-2013, section 1 , Pass
DIN 4102 , B2
EN 1021/1-2 , Pass
IMO 2010 FTP part 8 , Pass
NF P 92/503-507 , M2
NFPA 260 , Class 1

Resistencia al desgaste
ASTM D3597/D4157 (#10 cotton duck) ,
100.000 double rubs Wyzenbeek
ISO 12947-2 , > 300.000 rubs Martindale

Resistencia al frotamiento
AATCC 8
5 (scale 1-5) wet / 5 (scale 1-5) dry
ISO 105 X12
5 (scale 1-5) wet / 5 (scale 1-5) dry

Insensibilidad a la luz
ISO 105 B02
7 (scale 1-8)

Etiquetas

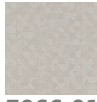


USCG –
EU MRA
0038

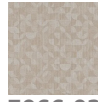
vinyl ^{plus}
COMMITTED TO
SUSTAINABLE DEVELOPMENT

Arches

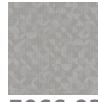
7066.01 - 7066.17



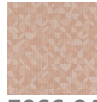
7066.01



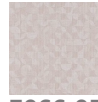
7066.02



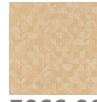
7066.03



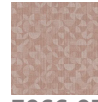
7066.04



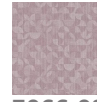
7066.05



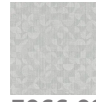
7066.06



7066.07



7066.08



7066.09



7066.10



7066.11



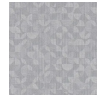
7066.12



7066.13



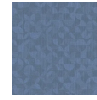
7066.14



7066.15



7066.16



7066.17